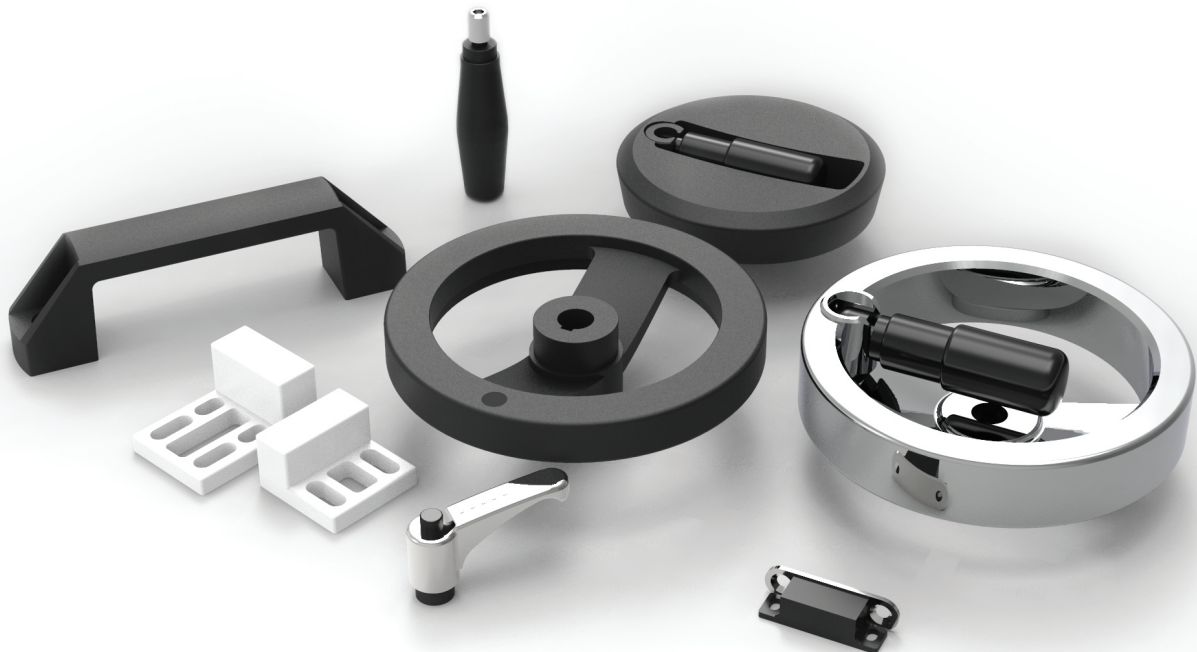




자동화설비 부품전문 (주)영광테크

Handle



Creating the Best Business Value

(주)영광테크는 품질과 환경, 고객을 생각하는 기업입니다.

08

Handle

메인화면 구석에 3D모델링은 실제품과 차이가 있을 수 있습니다.

매립형 _page 216

ZN _page 216

SUS _page 217

플라스틱 _page 219

일반형 _page 219

회전형 _page 230

캠록, 래치 _page 231

매미고리 _page 235

핸들 _page 239

Wheel _page 239

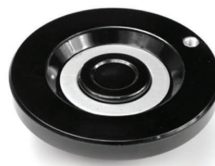
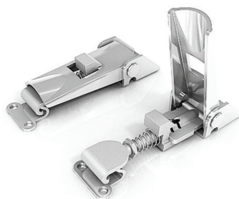
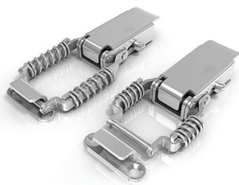
Crank _page 245



HANDLE

내구성 내식성이 우수한 다양한 소재의 제품

핸들은 패널로 부터 돌출부를 최소한 제품부터 샤프트에 쓰이는 핸들 등
각종 산업용기기 반도체장비 정보통신기기등에 쓰이는 손잡이 부터
진동이 심한 케이스의 도어나 강력한 밀폐를 요하는 도어용 캠록까지
다양한 제품으로 사용 용도에 맞게 쓸수 있습니다.

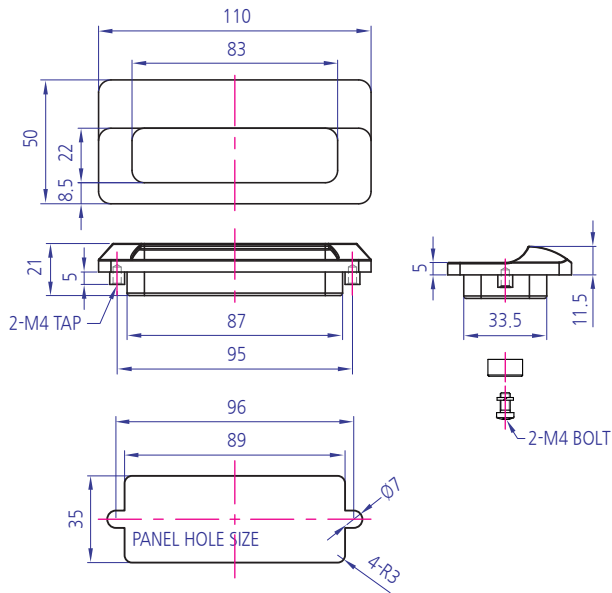
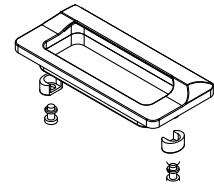


매립형 핸들(아연합금)

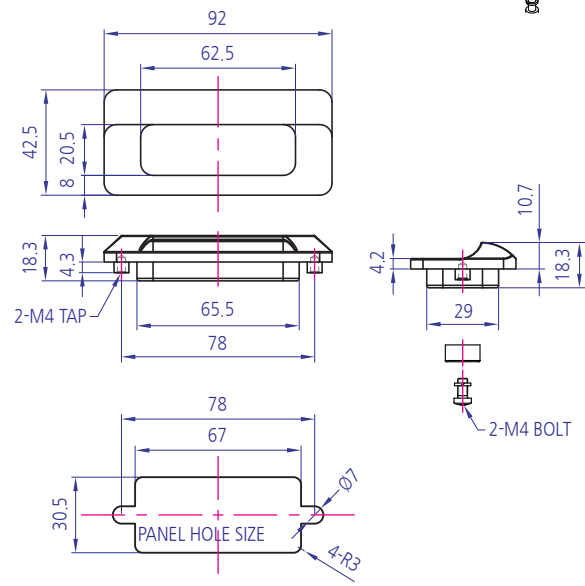
YKHD-ID Z Series

Technical Data

Material	ZINC ALLOY
Surface Processing	DC(무광), CR(유광), BK(흑색)
Application	패널로부터 돌출을 최소화하여 협소한 장소에서 사용이 용이함



YKHD-ID Z 200



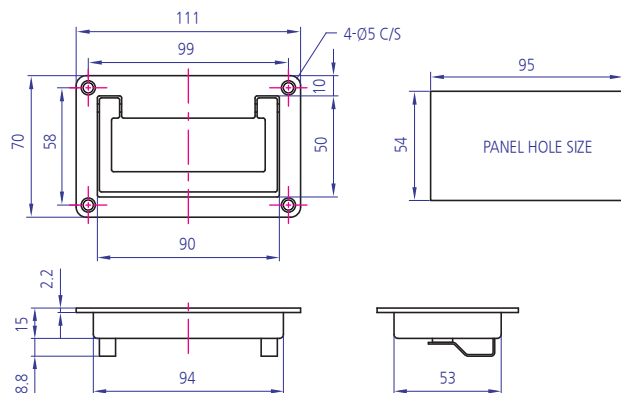
YKHD-ID Z 250

매립형 핸들(아연합금)

YKHD-ID Z300

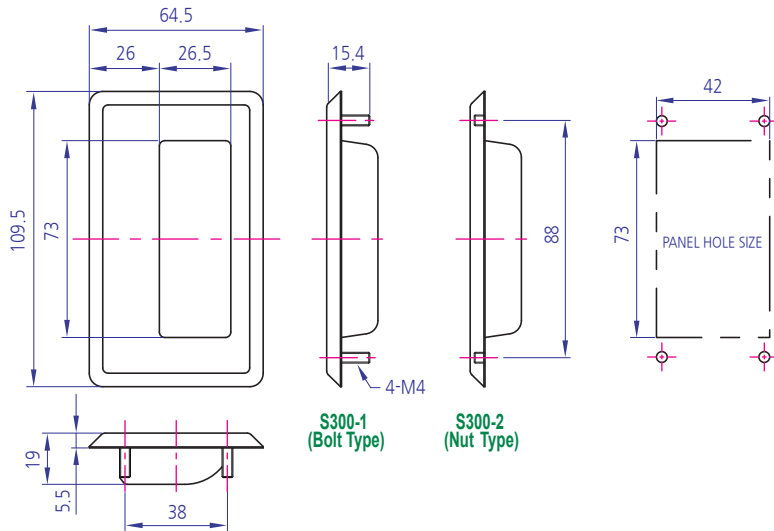
Technical Data

Material	ZINC ALLOY
Surface Processing	DC(무광), CR(유광), BK(흑색)
Application	패널로부터 돌출을 최소화하여 협소한 장소에서 사용이 용이함



Technical Data

Material	SUS304
Surface Processing	헤어라인
Application	패널로부터 돌출을 최소화하여 협소한 장소에서 사용이 용이함

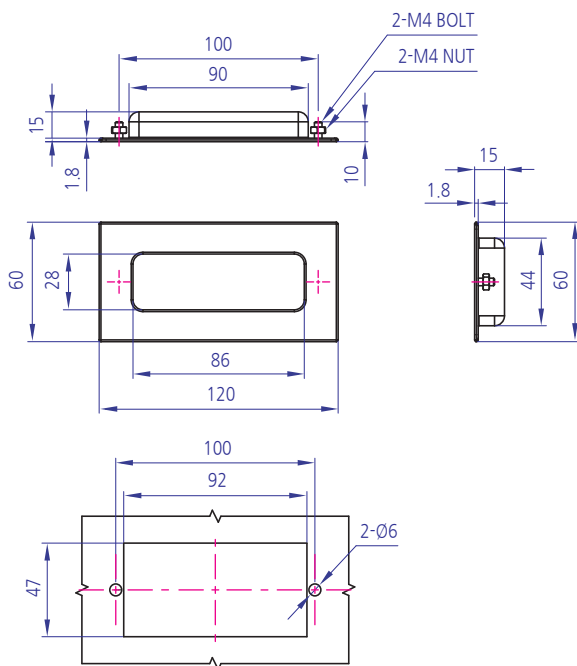


매립형 핸들(SUS) YKHD-ID S300



Technical Data

Material	SUS304
Surface Processing	헤어라인
Application	패널 매립형으로 돌출이 적음
참고	이화학기기, 산업기계, 분-배전반 등



매립형 핸들(SUS) YKHD-CA-1013

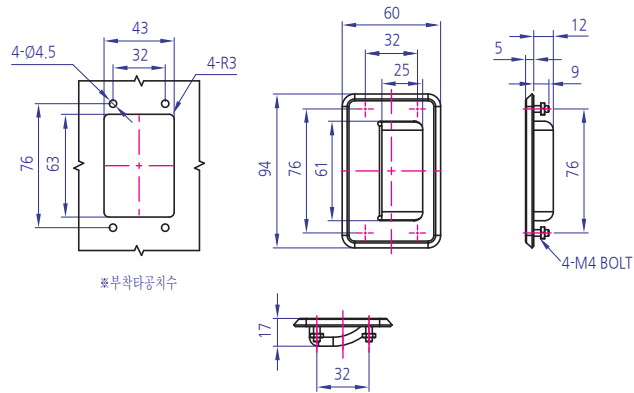


매립형 핸들(SUS)

YKHD-CA-1011 Series

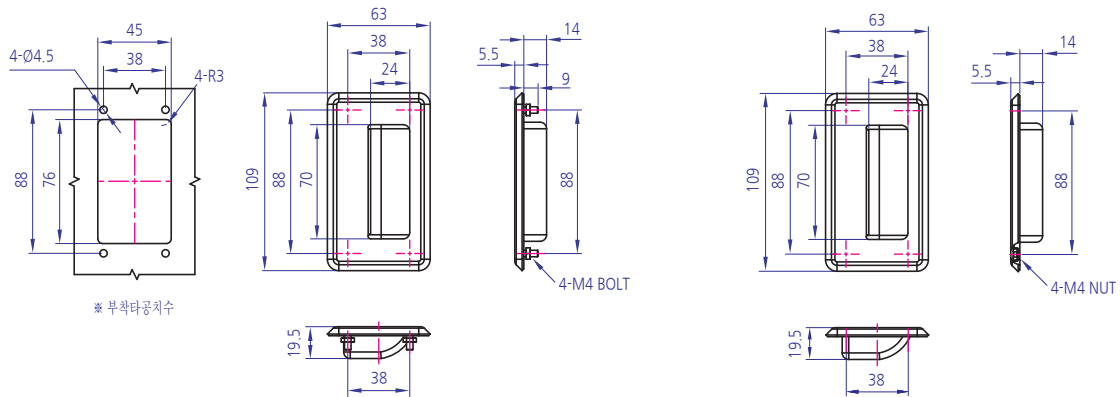
Technical Data

Material	SUS304
Surface Processing	헤어라인
Application	패널 매립형으로 돌출이 적음
참고	이화학기기, 산업기계, 분·배전반 등



*부착타공치수

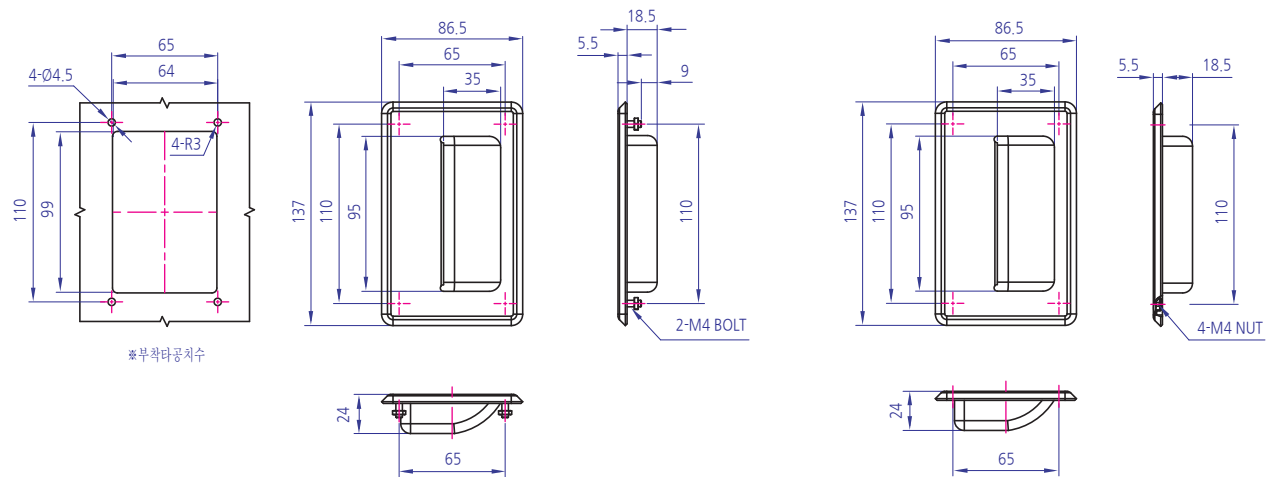
CA-1011-1



*부착타공치수

CA-1011-2

CA-1011-2N



*부착타공치수

CA-1011-3

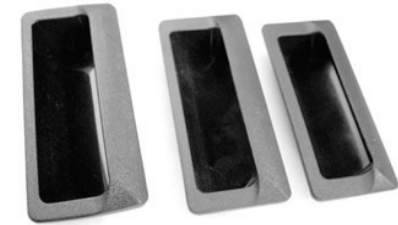
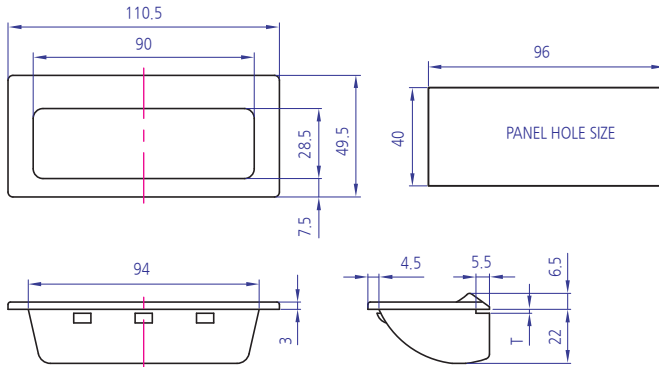
CA-1011-3N

Roller
Bearing Holder
Motor Base
Bracket
Hanger Shaft
Multi Block
Joint
Hinge
Magnet
Handle

Foot Base
Leveling Foot
Cover
End Cap
Bolt
Nut
Washer
Special
Profile
Caster

Technical Data

Material	PVC
Surface Processing	BLACK(흑), IVORY(아이보리)
Application	패널로부터 돌출을 최소화하여 협소한 장소에서 사용이 용이함



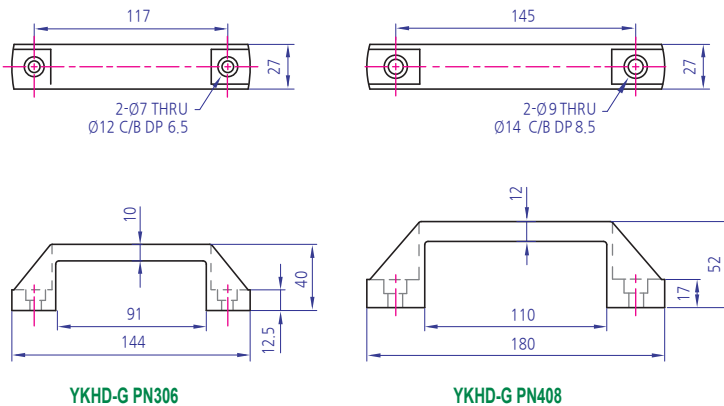
규격	T
PE-4-1	1.0
PE-4-2	1.2
PE-4-3	1.6
PE-4-4	2.0

핸들

YKHD-ID Series

Technical Data

Material	PLASTIC
Surface Processing	BLACK
Application	6mm, 8mm용 도어핸들



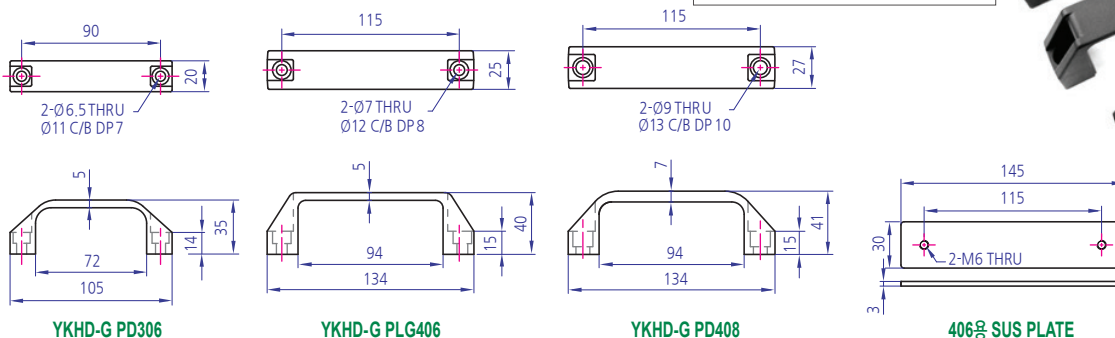
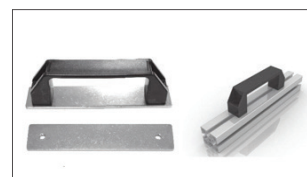
PVC 핸들 YKHD-G PN Series (남선형)



Technical Data

Material	PVC
Surface Processing	BLACK
Application	6mm, 8mm용 도어핸들
참고	YKHD-G PLG406 제품은 SUS PLATE와 SET로 사용가능

PVC 핸들 YKHD-G PD, PLG, Series (대형, LG형)



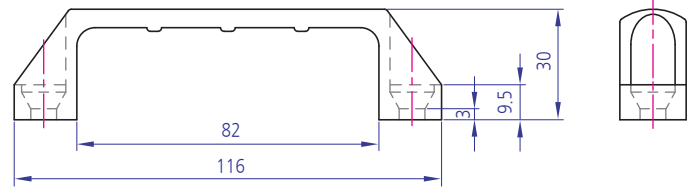
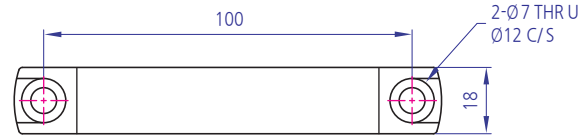
핸들

YKHD-G A100



Technical Data

Material	ALDC12
Surface Processing	Silver(액체도장)
Application	산업용기기, 사무기기, 음향기기 등



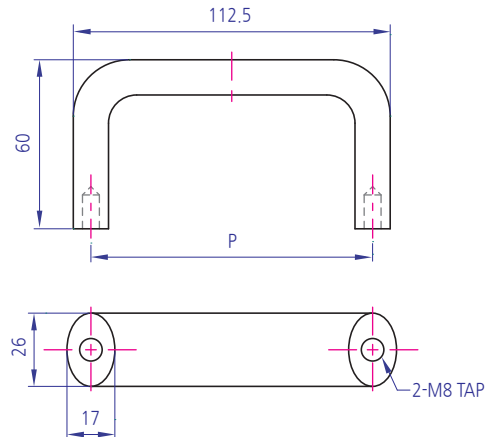
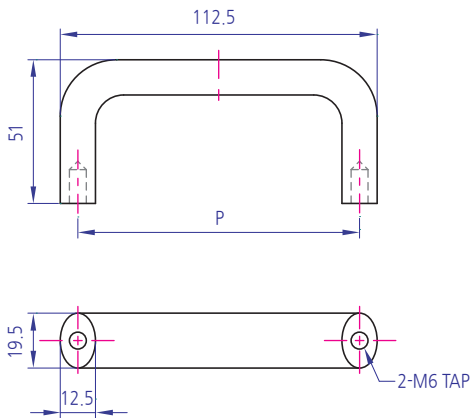
일반형 핸들

YKHD-G AE Series



Technical Data

Material	ZINC ALLOY
Surface Processing	DC(무광), CR(유광), BK(흑색)
Application	반도체장비, 정보통신장비 등

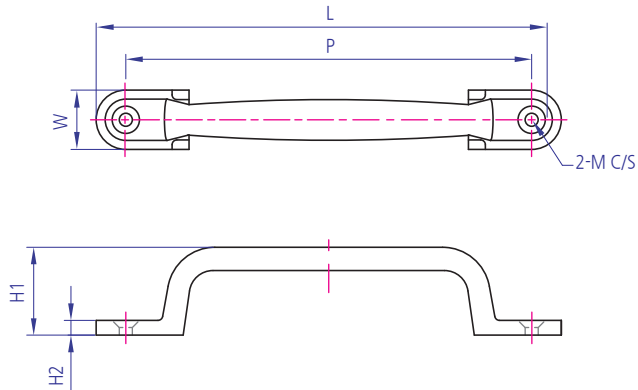


제품명	P
AE 19.5-100	100
AE 19.5-150	115
AE 19.5-200	130
AE 19.5-250	150
AE 19.5-300	160

제품명	P
AE 26-100	100
AE 26-150	150
AE 26-200	200
AE 26-250	250
AE 26-300	300

Technical Data

Material	ZINC ALLOY
Surface Processing	DC(무광), CR(유광)
Application	정보통신 장비, 반도체 장비 등



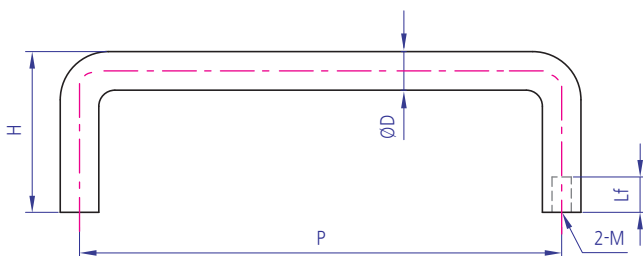
일반형 핸들 YKHD-G S Series



제품명	L	P	W	H1	H2	M
S79	94	79	15	19	4.2	4.5
S113.5	133.5	113.5	20	27	5.2	4.5
S139.5	161.5	139.5	22	32	6.2	5.5
S171	196	171	25	37	6.2	5.5

Technical Data

Material	HB(STEEL), HBS(STAINLESS STEEL)
Surface Processing	CR / 연마
Application	반도체장비, 정보통신장비 등



일반형 핸들(환봉형) YKHD-G HB, HBS Series



	HB DXP	D	P	H	Lf	M
	HB (STEEL)	HB 5X32.4	5	32.4	24	7
HB 5X37		5	37	24.5	7	M3
HB 6X52		6	52	23	7	M3
HB 6X60		6	60	23	7	M3
HB 6X90		6	90	23	10	M4
HB 8X48		8	48	27	10	M4
HB 8X58		8	58	27	10	M4
HB 8X75		8	75	27	10	M4
HB 8X95		8	95	27	10	M4
HB 8X100		8	100	27	10	M4
HB 8X105		8	105	27	10	M4
HB 8X120		8	120	27	10	M4
HB 8X125		8	125	27	10	M4

	HB DXP	D	P	H	Lf	M
	HB (STEEL)	HB 8X150	8	150	27	10
HB 8X180		8	180	27	10	M4
HB 10X100		10	100	40	11	M6
HB 10X120		10	120	40	11	M6
HB 10X125		10	125	40	11	M6
HB 10X150		10	150	40	15	M6
HB 8X180		10	180	40	11	M6
HB 12X125		12	125	50	11	M6
HB 12X150		12	150	50	11	M6
HB 12X190		12	190	50	15	M6
HB 12X200		12	200	50	11	M6
HB 12X250		12	250	50	11	M6
HB 16X300		16	300	52	12	M8

	HB DXP	D	P	H	Lf	M
	HB (STAINLESS STEEL)	HB 8X75	8	75	28	7
HB 8X95		8	95	28	7	M4
HB 8X105		8	105	28	7	M4
HB 8X125		8	125	28	7	M4
HB 10X100		10	100	40	10	M6
HB 10X120		10	120	40	10	M6
HB 10X125		10	125	40	10	M6
HB 10X150		10	150	40	10	M6

	HB DXP	D	P	H	Lf	M
	HB (STAINLESS STEEL)	HB 10X180	10	180	40	10
HB 10X200		10	200	40	10	M6
HB 10X250		10	250	40	10	M6
HB 12X125		12	125	50	11	M6
HB 12X150		12	150	50	11	M6
HB 12X200		12	200	50	11	M6
HB 12X250		12	250	50	11	M6

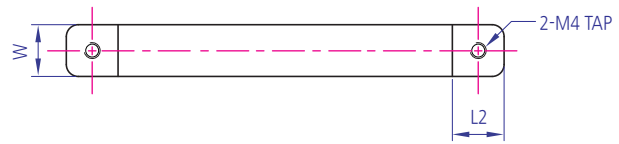
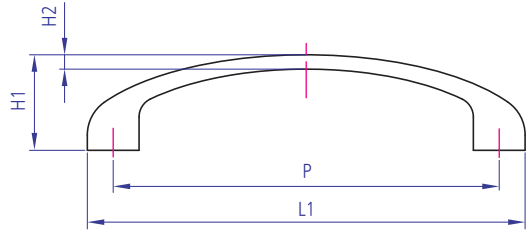
일반형 핸들

YKHD-G SC Series



Technical Data

Material	ZINC ALLOY
Surface Processing	CR(유광)
Application	차량 및 통신기기 등



CODE	L1	L2	P	W	H1	H2
SC-11.5*79	90	11	79	11.5	21	3
SC-14*96	110	125	96	14	23	38

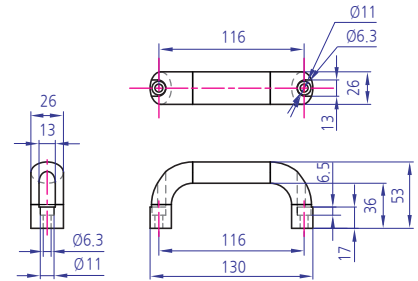
핸들

YKHD-CA-005 Series

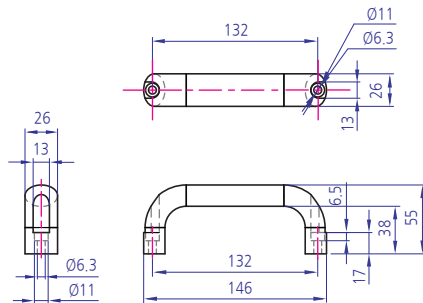


Technical Data

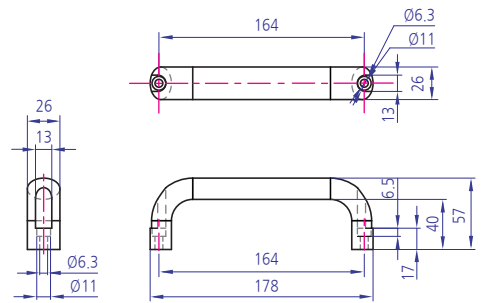
Material	ALDC12
Surface Processing	바렐연마, 흑색정전도장
Application	알루미늄 재질로 내식성이 뛰어나고 가벼움
참고	반도체장비, 정보통신장비 등



CA-005-1



CA-005-2

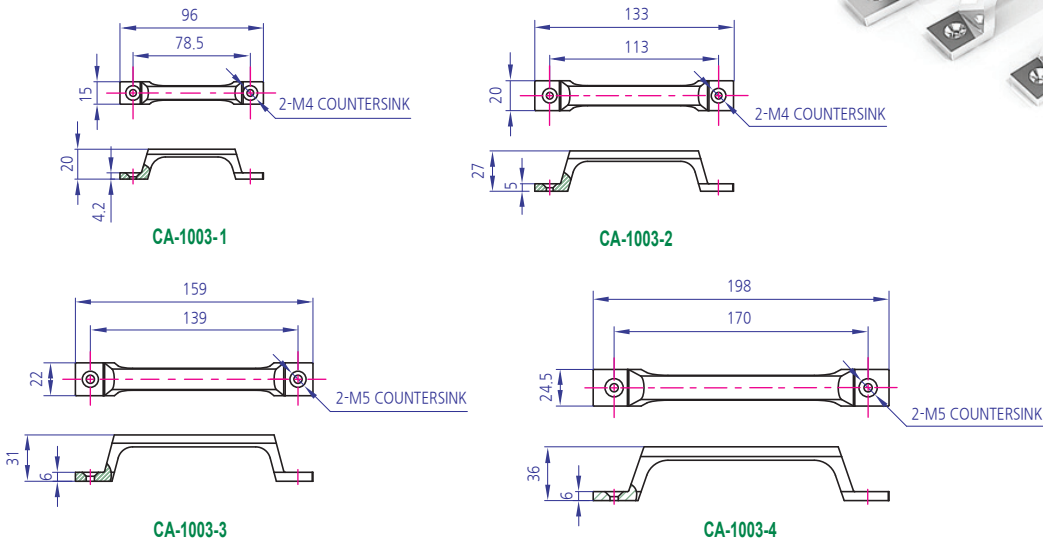


CA-005-3

Technical Data

Material	SUS주조
Surface Processing	광택연마
Application	스테인레스 재질로 내식성 및 내구성이 우수함
참고	반도체장비, 이화학기기, 산업기계 등

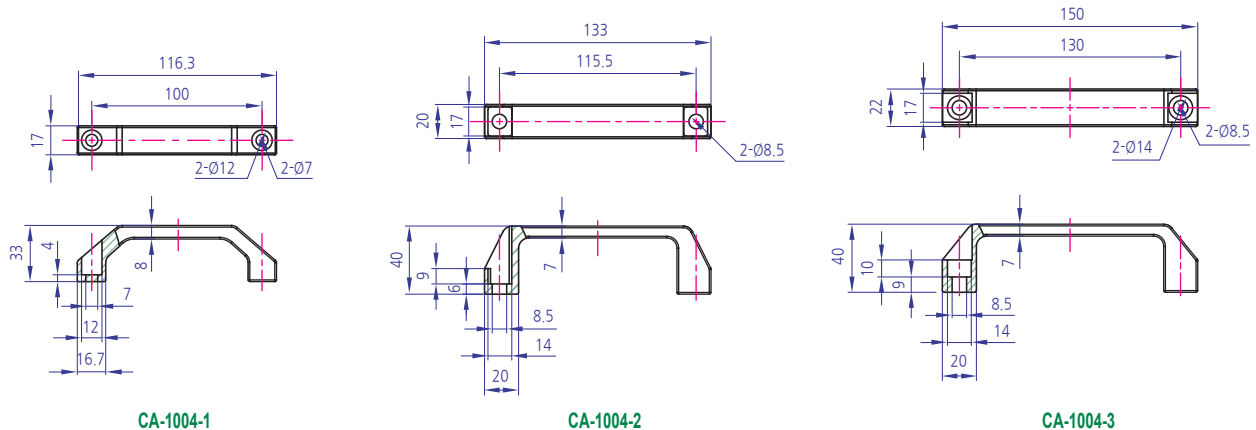
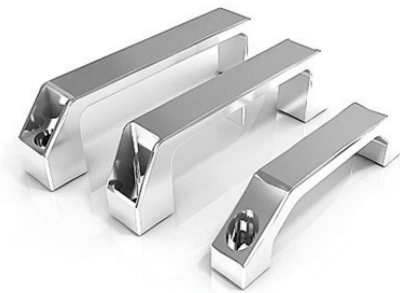
핸들
YKHD-CA-1003 Series



Technical Data

Material	SUS주조
Surface Processing	광택연마
Application	스테인레스 재질로 내식성 및 내구성이 우수함
참고	반도체장비, 이화학기기, 산업기계 등

핸들
YKHD-CA-1004 Series



핸들

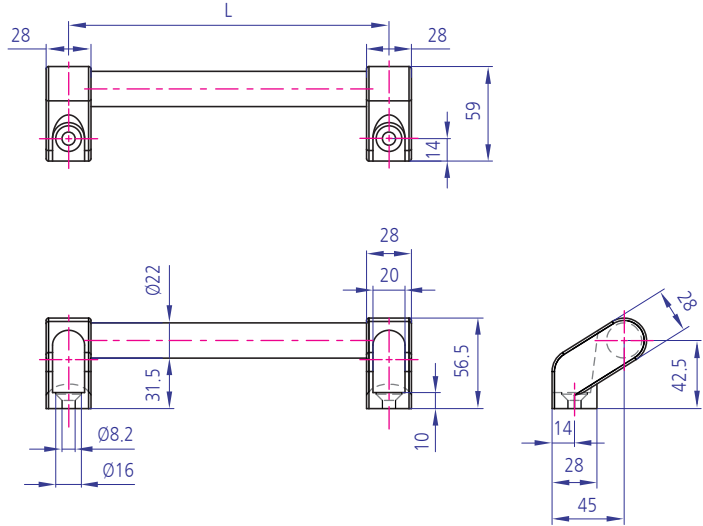
YKHD-CA-006 Series



CODE	L
YKHD-CA-006-1	150
YKHD-CA-006-2	200
YKHD-CA-006-3	250
YKHD-CA-006-4	300

Technical Data

Material	파이프-AL, 엘보-나일론
Surface Processing	파이프-알루마이트
Application	장착이 용이함
참고	산업기계, 반도체장비, 정보통신장비 등



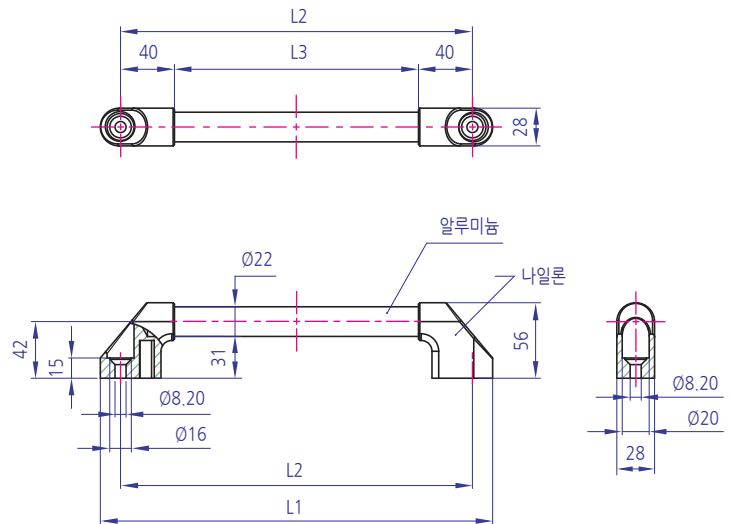
핸들

YKHD-CA-006S Series



Technical Data

Material	파이프-AL, 엘보-나일론
Surface Processing	파이프-알루마이트
Application	장착이 용이하고, L 치수 조정가능함
참고	산업기계, 반도체장비, 정보통신장비 등



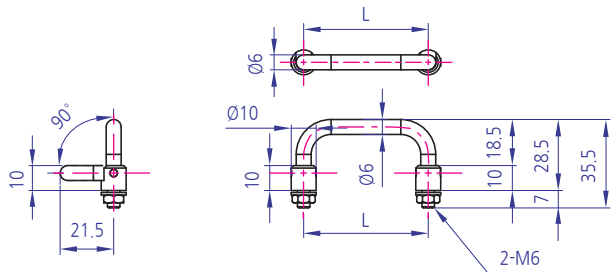
CODE	L1	L2	L3
YKHD-CA-006S-1	241	211	131
YKHD-CA-006S-2	291	261	181
YKHD-CA-006S-3	341	311	231
YKHD-CA-006S-4	391	361	281

Technical Data

Material	SUS주조 304
Surface Processing	광택연마
Application	미사용시 핸들을 접을 수 있어 돌출을 최소화 함
참고	반도체장비, 이화학기기, 산업기계, 정보통신장비 등

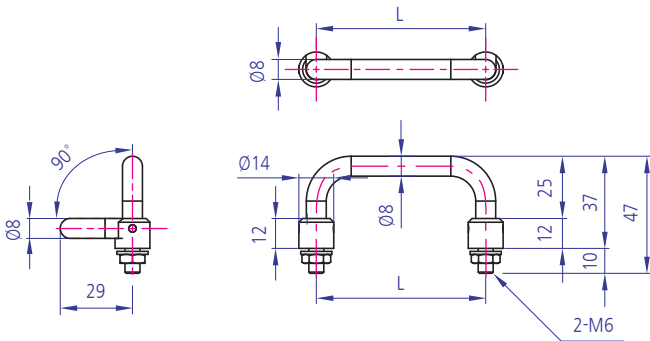
핸들

YKHD-CA-1007 Series



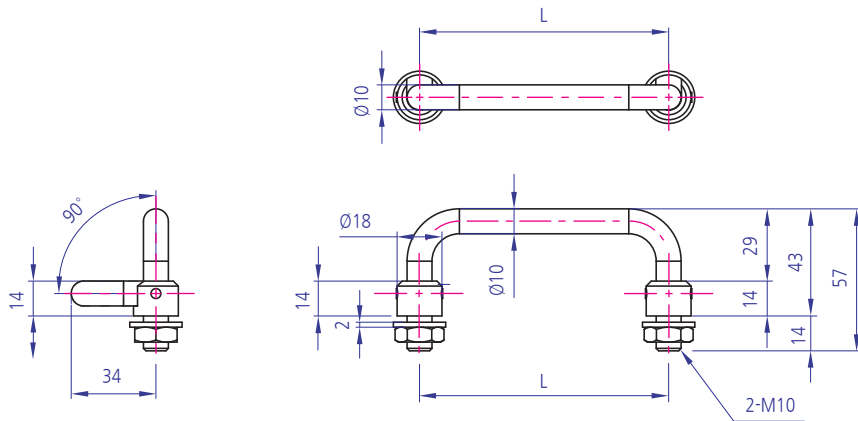
CA-1007-101-3

CODE	L
YKHD-CA-1007-101 A,B	50
YKHD-CA-1007-102 A,B	75
YKHD-CA-1007-103 A,B	90



CA-1007-201-5

CODE	L
YKHD- CA-1007-201 A,B	68
YKHD- CA-1007-202 A,B	90
YKHD- CA-1007-203 A,B	100
YKHD- CA- 1007-204 A,B	110
YKHD- CA- 1007-205 A,B	120



CA-1007-301-5

CODE	L
YKHD-CA-1007-301 A,B	100
YKHD-CA-1007-302 A,B	120
YKHD-CA-1007-303 A,B	125
YKHD-CA-1007-304 A,B	150
YKHD-CA-1007-305 A,B	180

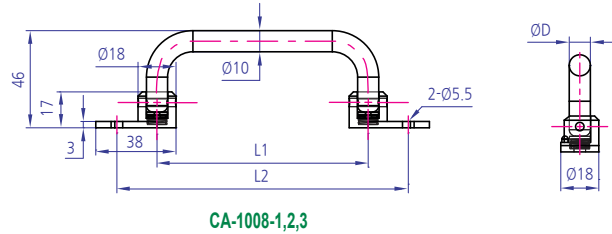
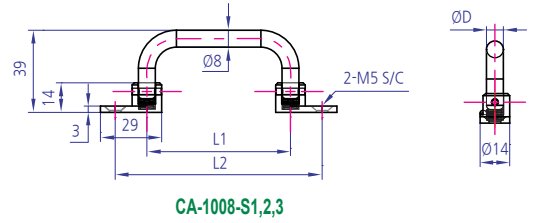
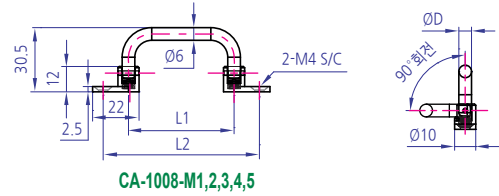
핸들

YKHD-CA-1008 Series



Technical Data

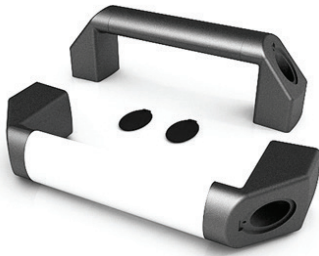
Material	SUS주조 304
Surface Processing	광택연마
Application	미사용시 핸들을 접을 수 있어 돌출을 최소화 함
참고	반도체장비, 이화학기기, 산업기계, 정보통신장비 등



CODE	L1	L2	Ø3
YKHD-CA-1008-S1	50	74	6
YKHD-CA-1008-S2	75	99	
YKHD-CA-1008-S3	90	114	
YKHD-CA-1008-M1	68	98	8
YKHD-CA-1008-M2	90	120	
YKHD-CA-1008-M3	100	130	
YKHD-CA-1008-M4	110	140	
YKHD-CA-1008-M5	120	150	
YKHD-CA-1008-1	100	138	10
YKHD-CA-1008-2	120	158	
YKHD-CA-1008-3	180	218	

핸들

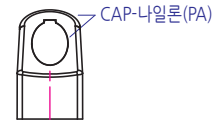
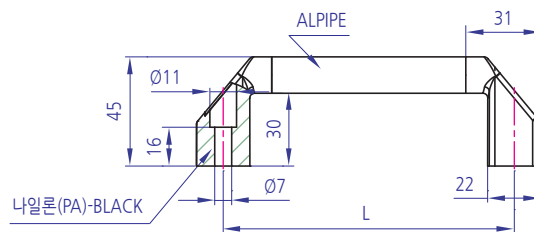
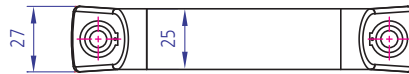
YKHD-CA-1021 Series



Technical Data

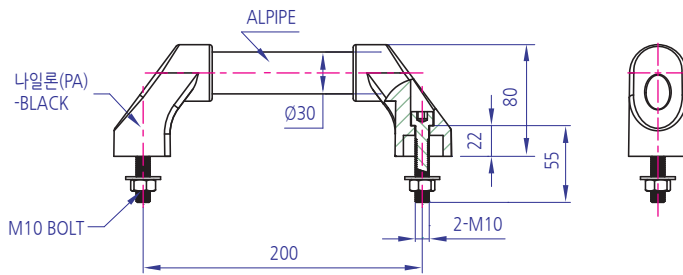
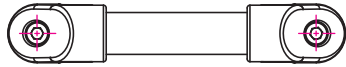
Material	파이프-AL, 엘보-나일론
Surface Processing	파이프-샌딩 후 아노다이징(흑색, 실버)
Application	장착이 용이하고, L 치수 조정 가능함
참고	반도체장비, 산업기계, 정보통신장비 등

CODE	L
YKHD-CA-1021-120B, V	120
YKHD-CA-1021-140B, V	140
YKHD-CA-1021-170B, V	170



Technical Data

Material	파이프-AL, 엘보-나일론
Surface Processing	파이프-샌딩 후 아노다이징(흑색, 실버)
Application	장착이 용이하고, L 치수 조정 가능함
참고	반도체장비, 산업기계, 정보통신장비 등



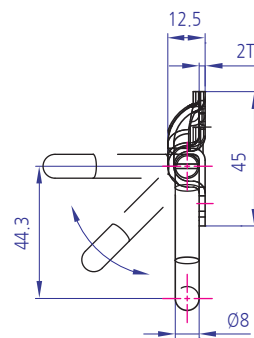
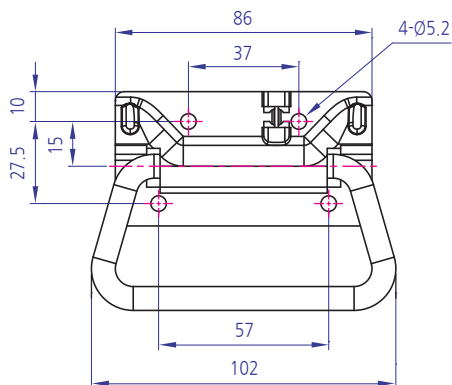
핸들 YKHD-CA-1022 Series



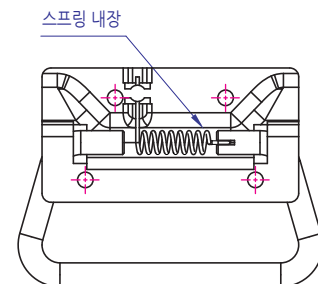
CODE	L
YKHD-CA-1022-200B, V	200
YKHD-CA-1022-300B, V	300
YKHD-CA-1022-350B, V	350
YKHD-CA-1022-400B, V	400
YKHD-CA-1022-500B, V	500
YKHD-CA-1022-600B, V	600
YKHD-CA-1022-700B, V	700

Technical Data

Material	SUS, STEEL
Surface Processing	NATURAL, 크롬도금
Application	미사용시 핸들을 접을 수 있어 돌출을 최소화 함
참고	반도체장비, 산업기계, 정보통신장비 등



핸들 YKHD-CA-1023 Series



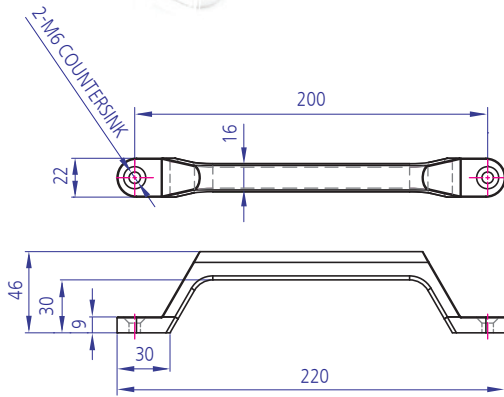
※ 손잡이부에서 손을 떼면 스프링 기능에 의해 도면과 같은 상태가 됩니다.

핸들

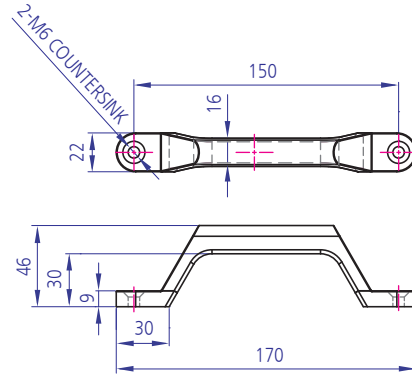
YKHD-CA-1024 Series

Technical Data

Material	SUS주조 304
Surface Processing	광택연마
Application	스테인레스 재질로 내식성 및 내구성이 우수함
참고	반도체장비, 이화학기기, 산업기계, 정보통신장비 등



YKHD-CA-1024-200



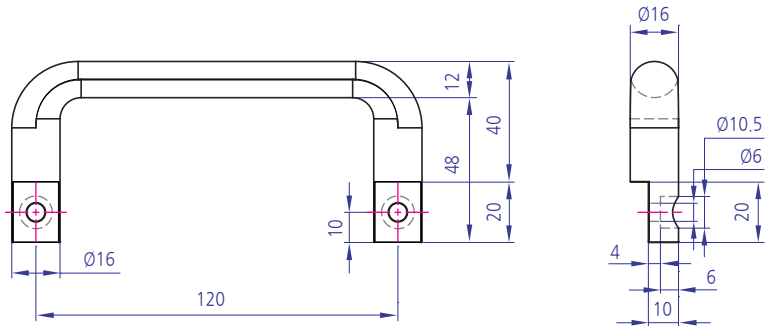
YKHD-CA-1024-150

핸들

YKHD-CA-1025 Series

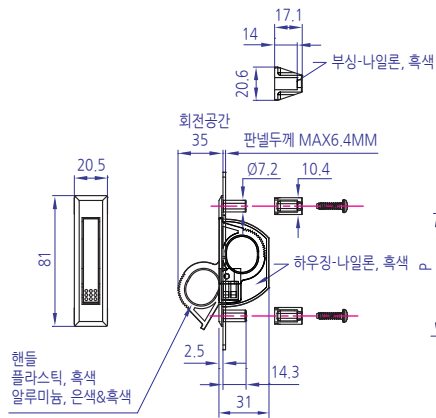
Technical Data

Material	SUS주조 304
Surface Processing	광택연마
Application	스테인레스 재질로 내식성 및 내구성이 우수함
참고	반도체장비, 이화학기기, 산업기계, 정보통신장비 등

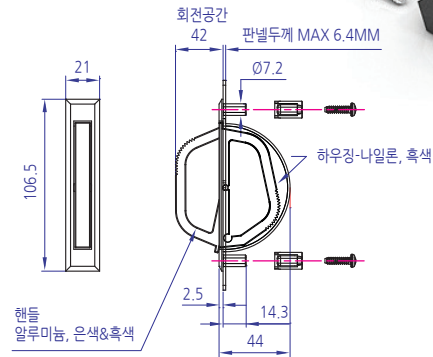


Technical Data

Material	NYLON
Surface Processing	NATURAL
Application	미사용시 180도 회전으로 돌출부 없음
참고	반도체장비, 이화학기기, 산업기계, 정보통신장비 등

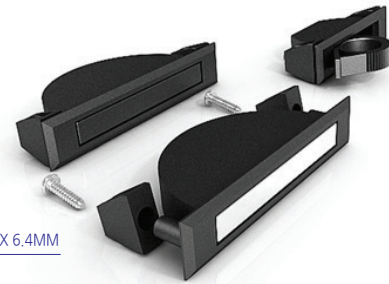


CA-1026-10



CA-1026-25

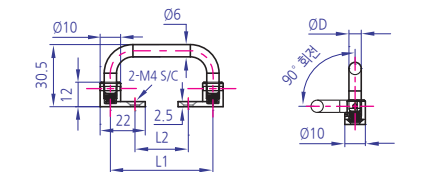
YKHD-CA-1026 Series



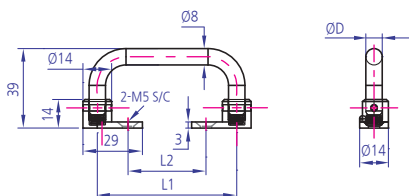
CODE	핸들색상	P	핸들재질
YKHD-CA-1026-10	흑색	76	플라스틱
YKHD-CA-1026-10A	흑색		
YKHD-CA-1026-10B	은색		
YKHD-CA-1026-25A	흑색	102	알루미늄
YKHD-CA-1026-25B	은색		

Technical Data

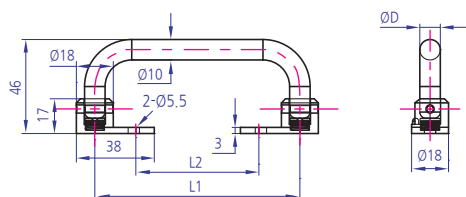
Material	SUS주조 304
Surface Processing	광택연마
Application	스테인레스 재질로 내식성 및 내구성이 우수함
참고	반도체장비, 이화학기기, 산업기계, 정보통신장비 등



CA-1027-S1,2,3



CA-1027-M1,2,3,4,5



CA-1027-1,2,3

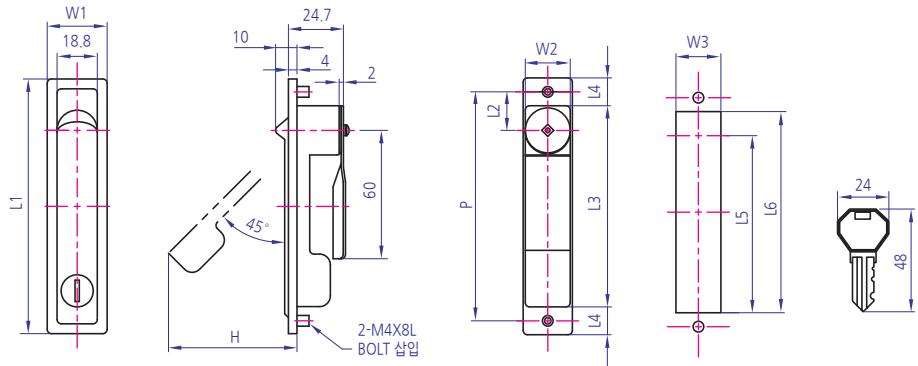
YKHD-CA-1027 Series



CODE	L1	L2	ØD
YKHD-CA-1027-S1	50	26	6
YKHD-CA-1027-S2	75	51	
YKHD-CA-1027-S3	90	76	
YKHD-CA-1027-M1	68	38	8
YKHD-CA-1027-M2	90	60	
YKHD-CA-1027-M3	100	70	
YKHD-CA-1027-M4	110	80	
YKHD-CA-1027-M5	120	90	
YKHD-CA-1027-1	100	62	10
YKHD-CA-1027-2	120	82	
YKHD-CA-1027-3	180	132	

회전형 핸들

YKHD-RH 505 Series



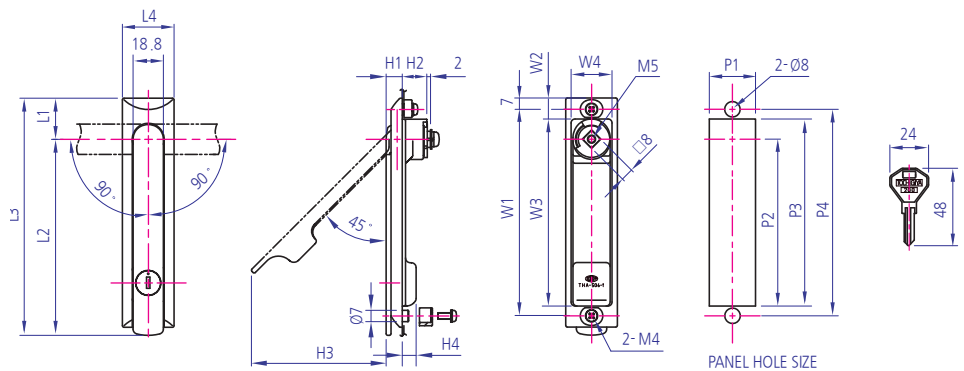
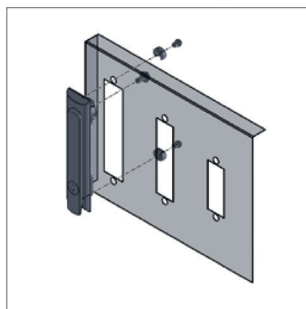
Technical Data

Material	ZINC ALLOY
Surface Processing	CR(유광)
Application	핸들의 조작성우수, 자체 키가 내장되어 있으므로 방법대책 확보. 완전 방수 기능, 좌우겸용
참고	THA-505-1,2,3 : WITHOUT KEY / THA-505- 1K,2K,3K : WITH KEY

회전형	L1	L2	L3	L4	L5	L6	W1	W2	W3	H	P	NET weight(g)
THA-505-1,1K	142	18.5	116	13	104	117	32	25.4	27	75	128	245
THA-505-2,2K	119	18	94	13	82	95	28	23	24	59	105	182
THA-505-3,3K	86	18	61	13	49	62	28	23	24	36	72	120

회전형 핸들

YKHD-RH 506 Series



Technical Data

Material	ZINC ALLOY
Surface Processing	CR(유광)
Application	핸들의 조작성우수, 자체 키가 내장되어 있으므로 방법대책 확보. 완전 방수 기능, 좌우겸용
참고	THA-506-1,2,3 : WITHOUT KEY / THA-506- 1K,2K,3K : WITH KEY / THA-506W- 1K,2K,3K : WITH KEY /

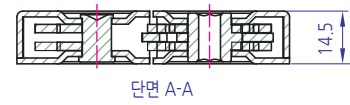
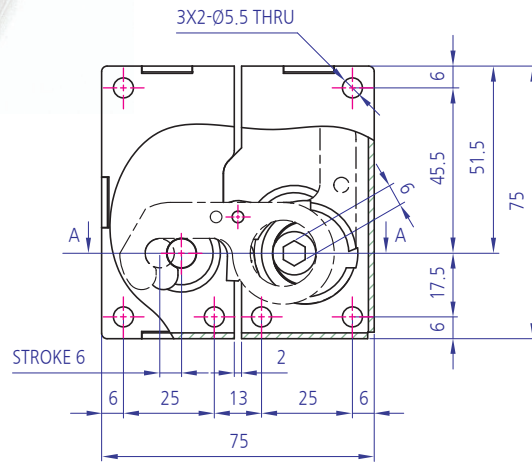
회전형	L1	L2	L3	L4	H1	H2	H3	H4	W1	W2	W3	W4	P1	P2	P3	P4	NET weight(g)
THA-506W-1K	25.5	121.5	142	25.5	11	14.5	89.5	7.6	128	13	115.95	25.4	27	104	117	128	284
10					15.5	8.6		282									
THA-506W-2K	25	99.5	119	28	11	14.5	75.3	7.6	105	12.5	93.94	23	24	82	95	105	225
10					15.5	8.6		222									
THA-506W-3K	25	66.5	86	28	11	14.5	45	7.6	72	12.5	60.89	23	24	49	62	72	187
10					15.5	8.6		186									

핸들 (캠록)

YKLD-CC-1022 Series

Technical Data

Material	SPCC(냉각압연 강판)
Surface Processing	ZN(아연도금)
Application	핸들을 회전시키면 결쇠가 걸려 당겨지면서 밀착됨
참고	진동이 심한 케이스의 도어, 강력한 밀폐를 요구하는 도어

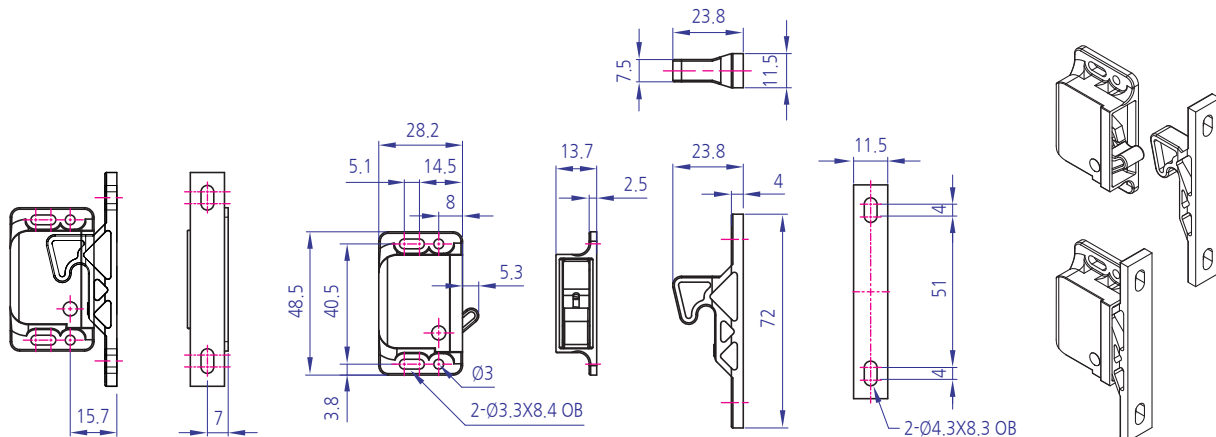
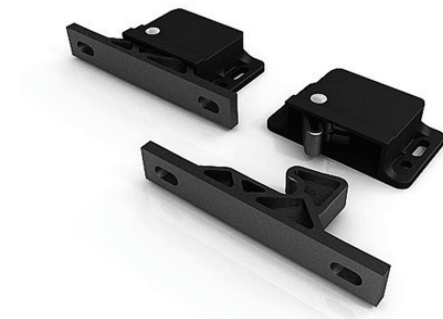


핸들 (캠록)

YKLD-CC 1024 Series

Technical Data

Material	ABS
Surface Processing	BLACK
Application	도어를 당겨서 열 수 있음
참고	반도체 장비, 각종 산업기기 등

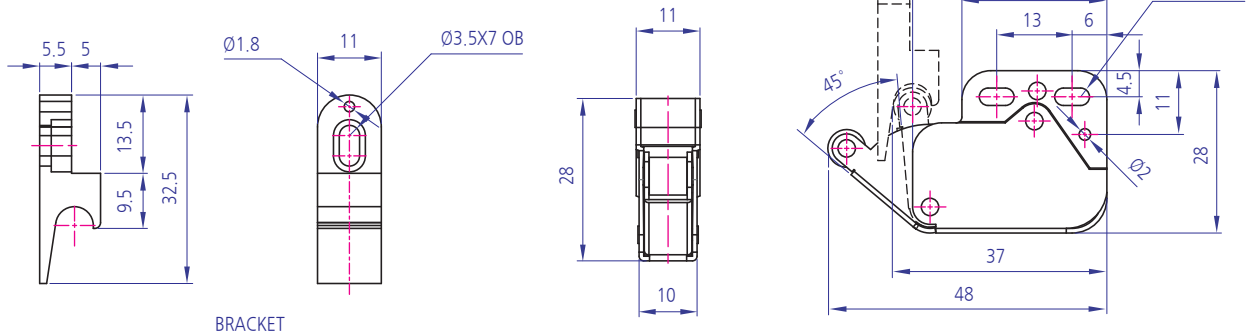


Technical Data

Material	SUS304, 플라스틱
Surface Processing	크롬도금(CR)
Application	원터치로 잠금과 풀림이 가능함
참고	각종 산업기기 등

핸들(캠록)

YKLD-CC-1025 Series



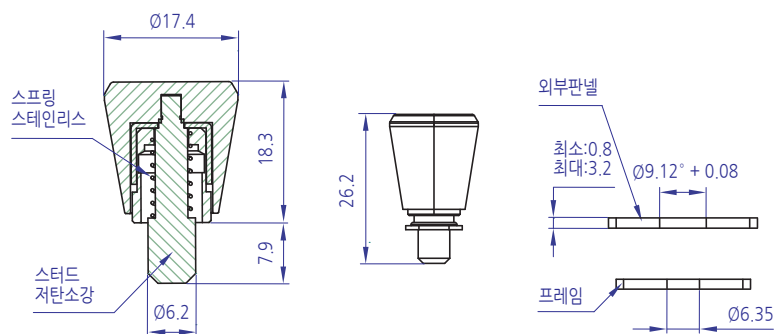
BRACKET

Technical Data

Material	노브-알루미늄, 스테드-스틸
Surface Processing	스텝드-아연도금
Application	도어 탈 · 부착이 용이함
참고	정보 통신장비 등

핸들(노브)

YKLD-CE-AA05-0018A

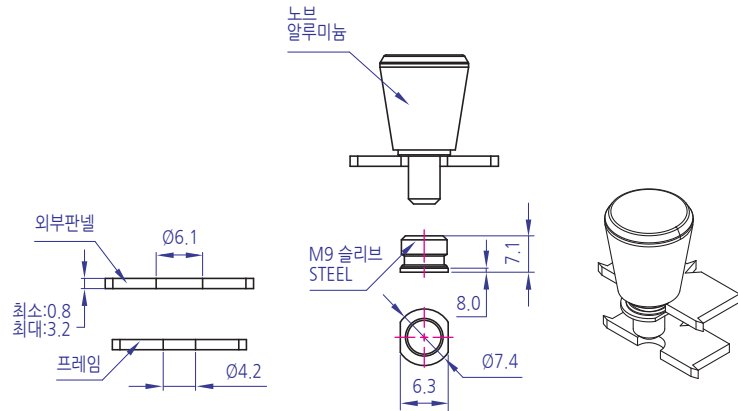
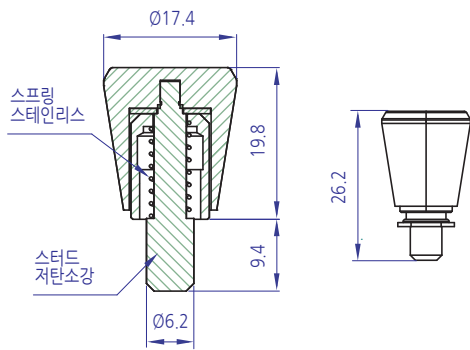


핸들(노브)

YKLD-CE-AA05-0018B

Technical Data

Material	노브-알루미늄, 스테드-스틸
Surface Processing	스텝드-아연도금
Application	도어 탈·부착이 용이함
참고	정보 통신장비 등

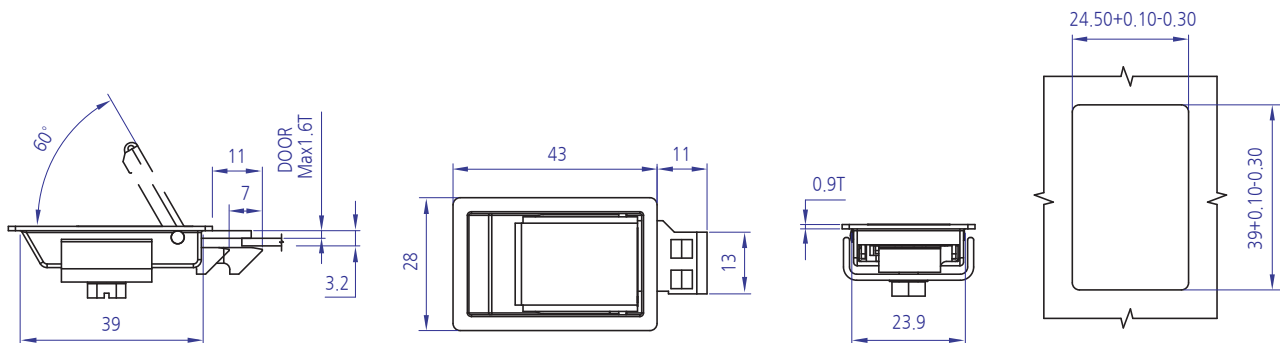


핸들(래치)

YKLD-CE-AA04-001

Technical Data

Material	SUS304
Surface Processing	헤어라인
Application	패널 매립형으로 장착이 용이함
참고	반도체장비, 산업기계, 분·배전반, 정보통신 장비 등

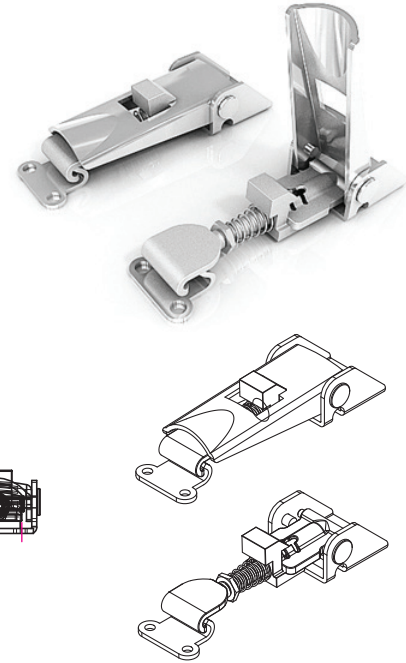
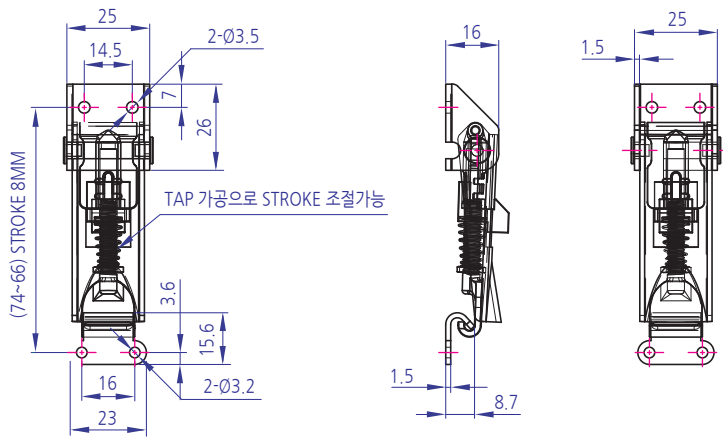


Technical Data

Material	SUS304
Surface Processing	바렐연마
Application	걸고리 간격을 조절할 수 있고 LOCK 장치가 있어 진동에 풀림을 방지할 수 있음
참고	정보 통신장비, 반도체 장비, 각종 산업기기 등

핸들(매미고리)

YKLD-CC-1017

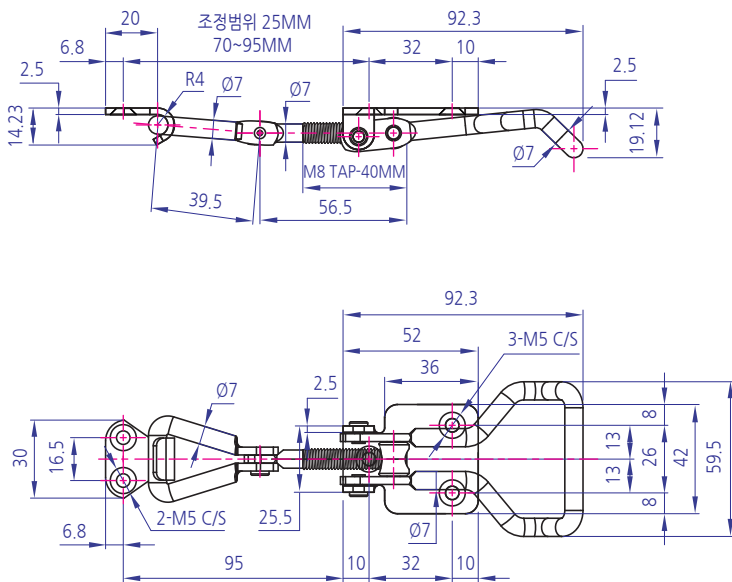


Technical Data

Material	STEEL
Surface Processing	아연도금(ZN)
Application	걸고리 위치를 조정하여 취부 간격을 조정할 수 있음
참고	분-배전반, 제어반, 각종 산업기기 등

핸들(매미고리)

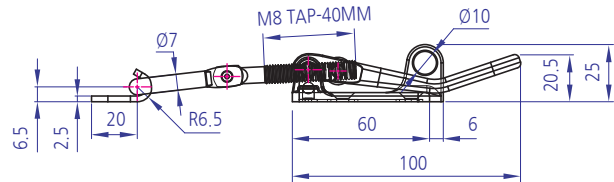
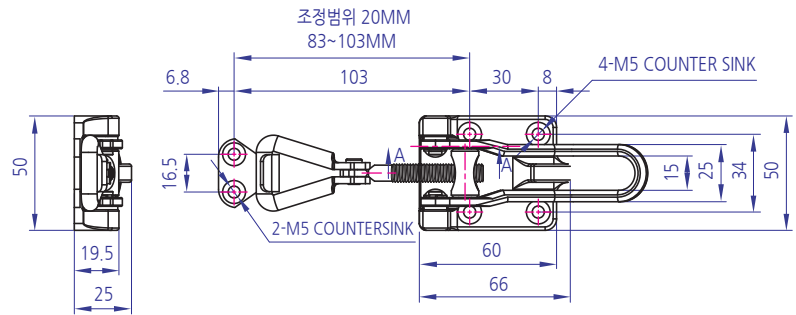
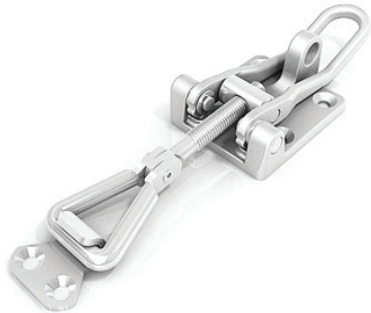
YKLD-CC-1033



핸들(매미고리) YKLD-CC-1034

Technical Data

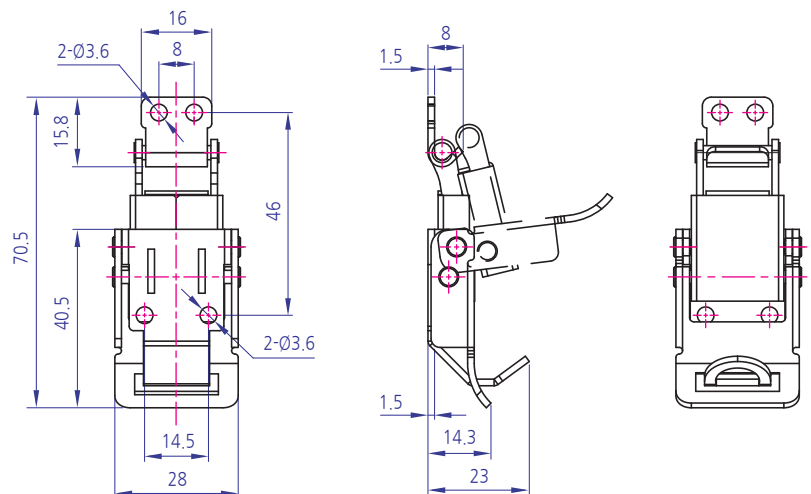
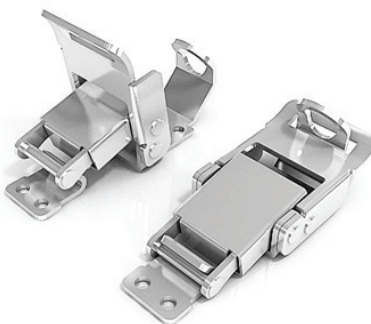
Material	STEEL
Surface Processing	전해연마
Application	걸고리 위치를 조정하여 취부 간격을 조절할 수 있음
참고	분-배전반, 제어반, 각종 산업기기 등



핸들(매미고리) YKLD-CC-1037

Technical Data

Material	SUS304
Surface Processing	바렐연마
Application	외부에서 잠금장치 보완됨

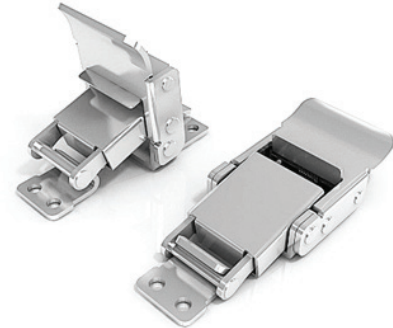
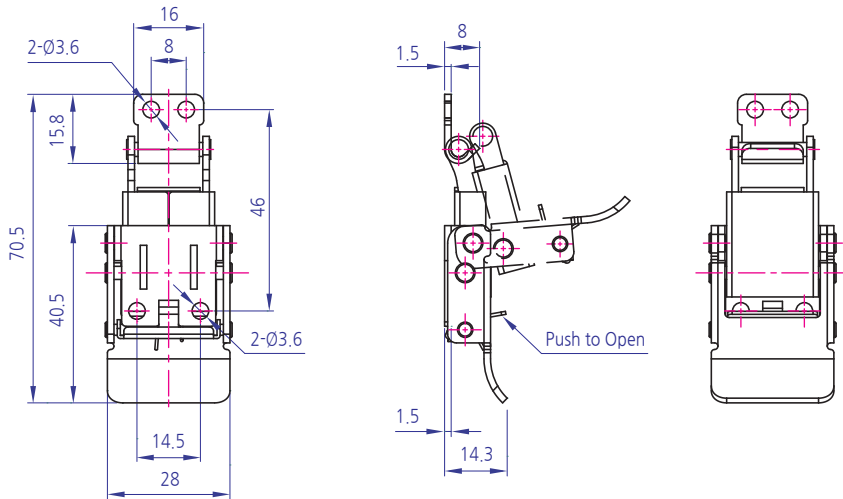


Technical Data

Material	SUS304
Surface Processing	바렐연마
Application	체결시 잠금장치가 작동하여 진동에 연림 보안됨

핸들(매미고리)

YKLD-CC-1038



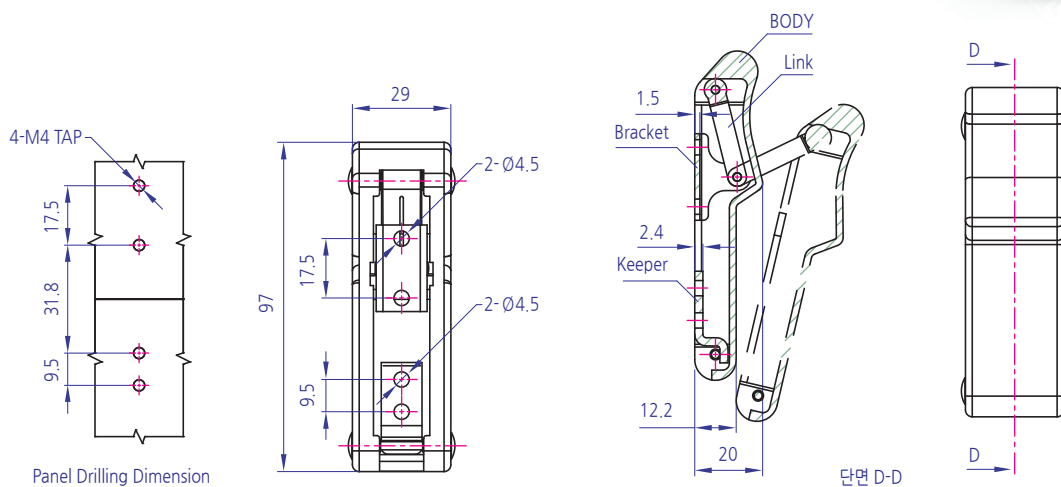
Technical Data

Material	RUBBER
Surface Processing	Black
Application	잠금장치 및 진동시 락킹이 견고함
참고	소방차, 산업용 기계, 특정차 box 등

핸들(매미고리)

YKLD-CC-1042

품명	재질
BODY	Rubber
Link	Nylon
Bracket	STS304
Keeper	STS304

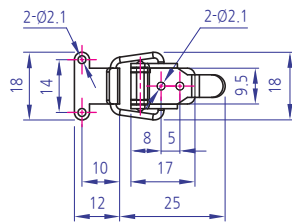


핸들(매미고리)

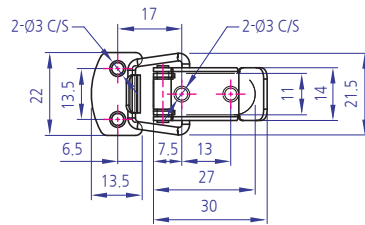
YKLD-CC-1049

Technical Data

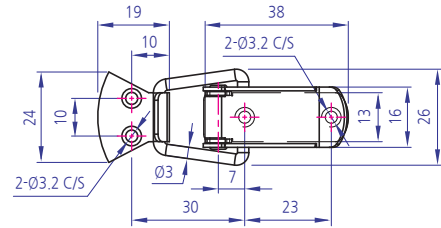
Material	SUS304
Surface Processing	바렐연마
Application	스테인레스 재질로 내식성, 내구성이 뛰어남
참고	계측기기, 공작기계, 제어반 등



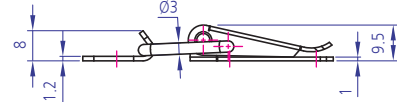
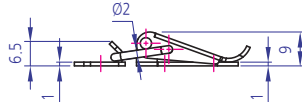
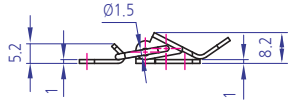
CC-1049-1



CC-1049-2



CC-1049-3

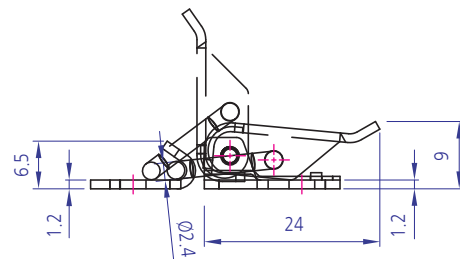
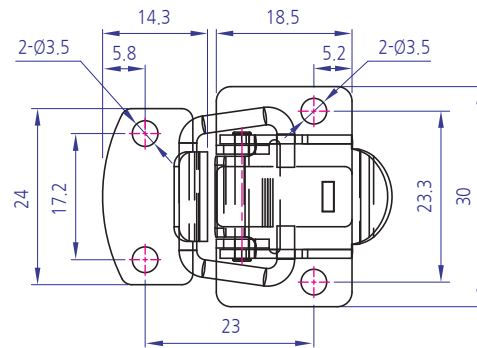
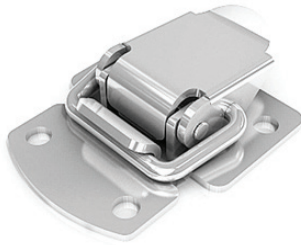


핸들(매미고리)

YKLD-CC-1050

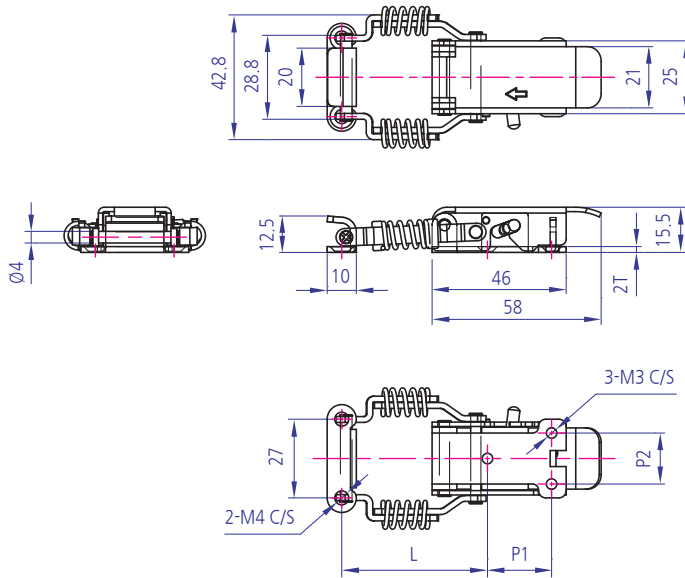
Technical Data

Material	SUS304
Surface Processing	바렐연마
Application	스테인레스 재질로 내식성, 내구성이 뛰어남
참고	계측기기, 공작기계, 제어반 등



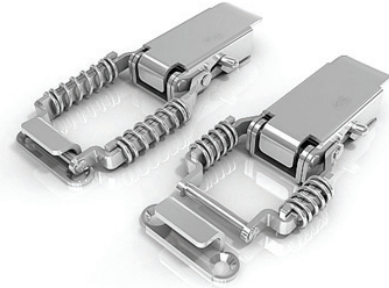
Technical Data

Material	SUS304
Surface Processing	바렐연마
Application	스프링에 의해 인장력이 우수함
참고	분배전반, 제어반, 각종 산업기기 등



핸들(매미고리)

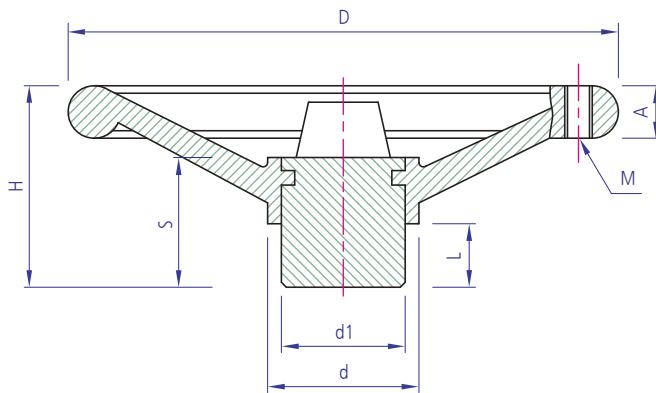
YKLD-CC-1051



CODE	L	P1	P2
CC-1051-A	50	22	17.5
CC-1051-B	66		

Technical Data

Material	Body:Nylon, Boss:Steel
Surface Processing	Body:Black, Boss:Zn(백)
Application	Shaft handle용



핸들

YKHD-BR-PH-Series



TYPE	D	H	A	S	L	d	d1	M
PH-80Ø	80	36	15	29	11	33	27	M6*1.0
PH-100Ø	100	44	15	35	14	36	30	M6*1.0
PH-160Ø	160	63	18	40	16	49	40	M10*1.5
PH-180Ø	180	66	19	40	14	50	40	M10*1.5
PH-200Ø	200	73	20	48	24	55	45	M10*1.5
PH-250Ø	250	76	23	50	21	63	50	M12*1.75
PH-300Ø	300	79	26	50	19	63	50	M12*1.75
PH-350Ø	350	72	26	50	19	65	50	M12*1.75

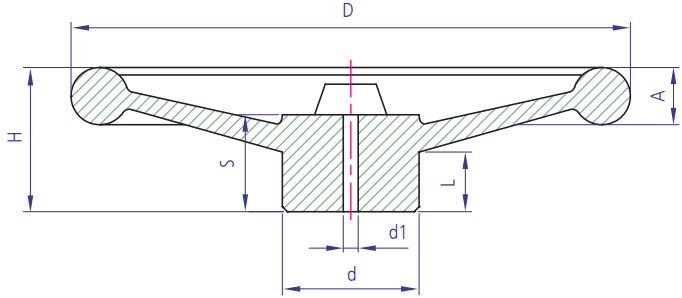
핸들

YKHD-BR-PHN-Series



Technical Data

Material	Body:Nylon, Boss:Steel
Surface Processing	Body:Black, Boss:Zn(백)
Application	Shaft handle용



TYPE	D	H	A	S	L	d	d1	M
PH-125Ø	125	47	15	35	12	42	35	M8*1.25
PH-140Ø	140	52	17	38	16	47	38	M8*1.25
PH-160Ø	160	57	19	40	16	51	40	M10*1.5
PH-200Ø	200	66	22	48	18	56	45	M10*1.5
PH-250Ø	250	71	23	50	17	63	50	M12*1.75

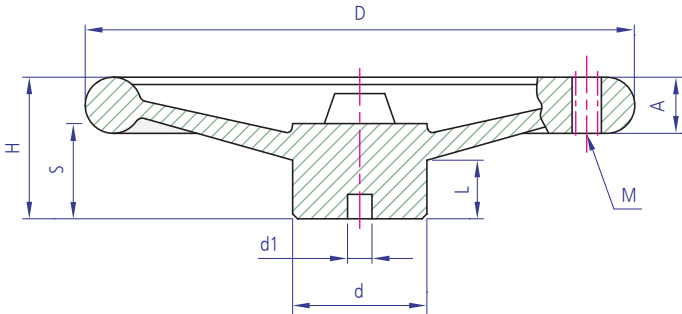
핸들

YKHD-BR-ALH Series



Technical Data

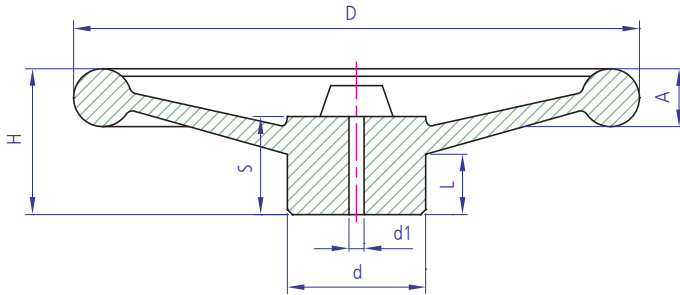
Material	ALDC12
Surface Processing	Cr도금
Application	Shaft handle용



TYPE	D	H	A	S	L	d	d1	M
ALH-80Ø	80	32	15	23	17	29	7	M6*1.0
ALH-100Ø	100	37	16	25	18	34	7	
ALH-125Ø	125	42	17	31	21	39	8	M8*1.25
ALH-140Ø	140	45	19	34	21	40	8	
ALH-160Ø	160	50	20	39	25	43	9	M10*1.5
ALH-180Ø	180	52	22	41	26	48	12	
ALH-200Ø	200	56	23	45	28	51	10	M12*1.75
ALH-225Ø	225	58	24	46	29	55	10	
ALH-250Ø	250	61	25	47	30	58	10	M12*1.75
ALH-300Ø	300	67	28	50	30	66	12	

Technical Data

Material	FCD(철주물)
Surface Processing	Cr
Application	Shaft handle용



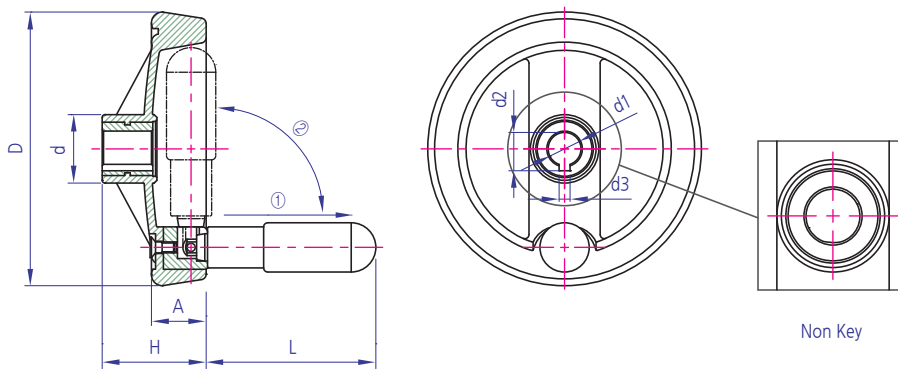
TYPE	D	H	A	S	L	d	d1
CH-800	80	34	16	25	14	35	8
CH-1000	100	37	15	27	12	40	8
CH-1250	125	48	18	29	15	40	10
CH-1400	140	47	19	31	16	45	10
CH-1500	150	51	19	33	16	45	10
CH-1600	160	52	17	37	20	46	10
CH-1800	180	51	20	38	20	50	10
CH-2000	200	51	21	39	22	51	10
CH-2500	250	60	23	45	25	59	12
CH-3000	300	69	28	46	25	60	12
CH-3500	350	80	30	50	30	65	13
CH-4000	400	78	31	51	30	75	12
CH-4500	450	79	35	54	29	84	12
CH-5000	500	81	38	56	29	85	12

핸들 YKHD-BR-CH Series



Technical Data

Material	Body:Nylon, Boss:Steel, 손잡이:Nylon,Steel
Surface Processing	Black
Application	Shaft handle용 손잡이를 위로 들어올려 접음
참고	3140 시리즈는Key타입과 Non key이 있습니다. 주문시 key 유무 및 재고 확인 부탁드립니다.



TYPE	D	H	A	L	d	d1	d2	d3
SL-3140-100	100	38	20	62	25	12	14	4
SL-3140-125	125	46	23	65	31	12	14	4
SL-3140-160	160	50	36	80	40	16	18	5

핸들 YKHD-BR-SL3140 Series



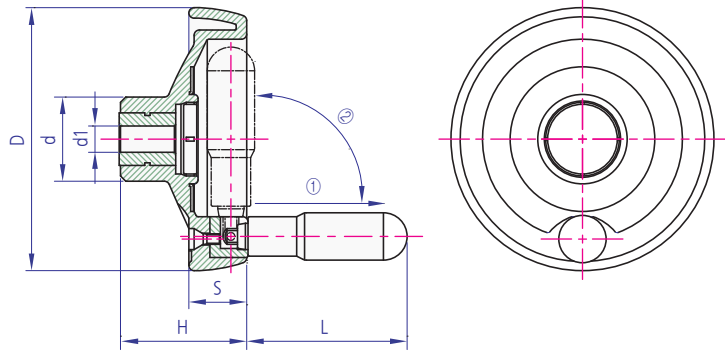
핸들

YKHD-BR-SL3150 Series



Technical Data

Material	Body:Nylon, Boss:Steel, 손잡이:Nylon,Steel
Surface Processing	Black
Application	Shaft handle용 손잡이를 위로 들어올려 접음



TYPE	D	H	S	L	d	d1
SL-3150-100	100	48	22	61	32	10
SL-3150-125	125	56	24	66	36	12
SL-3150-160	160	62	27	80	46	16
SL-3150-200	200	67	30	90	51	10

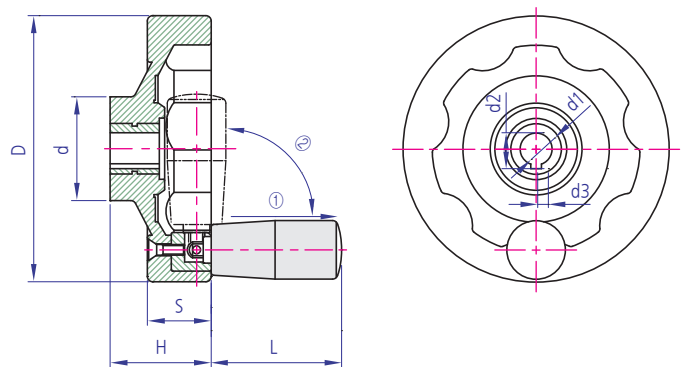
핸들

YKHD-BR-SL3160 Series



Technical Data

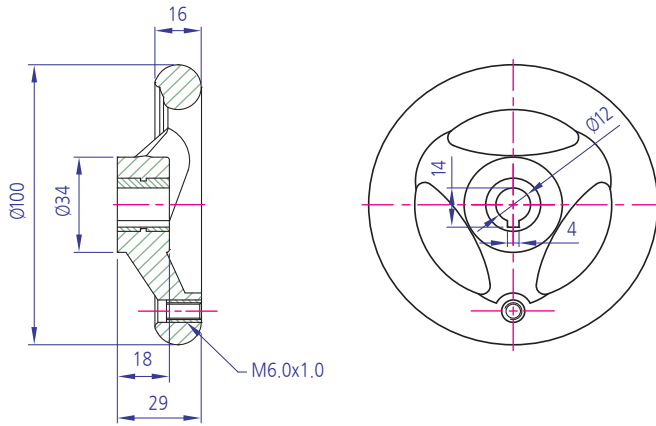
Material	Body:Nylon, Boss:Steel, 손잡이:Nylon,Steel
Surface Processing	Body, Boss :Black, 손잡이:Black, Zn(백)
Application	Shaft handle용 손잡이를 위로 들어올려 접음



TYPE	D	H	S	L	d	d1	d2	d3
SL-3160-100	100	38	24	49	39	12	13.5	4
SL-3160-125	125	43	27	64	46	12	13.5	4
SL-3160-150	150	48	30	64	48	16	18	5
SL-3160-160	160	54	31	81	55	16	18	5
SL-3160-200	200	59	33	84	60	18	21	6
SL-3160-250	250	66	36	80	70	25	28.5	8

Technical Data

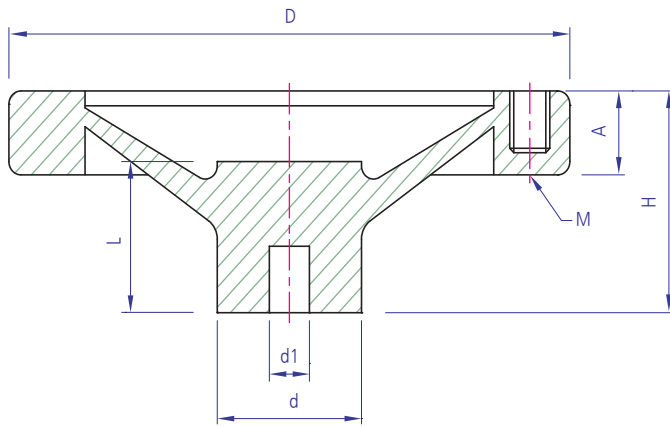
Material	Body:Bakelite, Boss:Steel
Surface Processing	Body:Black, Boss:Zn(백)
Application	Shaft handle용 손잡이를 위로 들어올려 접음



TYPE	D	H	S	d	d1	d2	d3	M
SL-3170-100	100	29	16	34	12	14	4	M6
SL-3170-125	125	27	18	32	12	14	4	M8
SL-3170-160	160	33	22	38	16	18.5	5	M10
SL-3170-200	200	41	24	44	18	21	6	M10

Technical Data

Material	ALDC12
Surface Processing	Black, Gray
Application	Shaft handle용



TYPE	D	H	A	L	d	d1	M
SL-3030-80Ø	80	30	12	19	28	10	M6*1.0
SL-3030-100Ø	100	33	13	21	30	10	M6*1.0
SL-3030-125Ø	125	45	15	30	31	12	M8*1.25
SL-3030-140Ø	140	35	15	21	36	14	M8*1.25
SL-3030-160Ø	160	38	18	27	42	14	M10*1.5
SL-3030-200Ø	200	57	21	38	42	18	M10*1.5

핸들 YKHD-BR-SL3170 Series



핸들 YKHD-BR-SL3030 Series



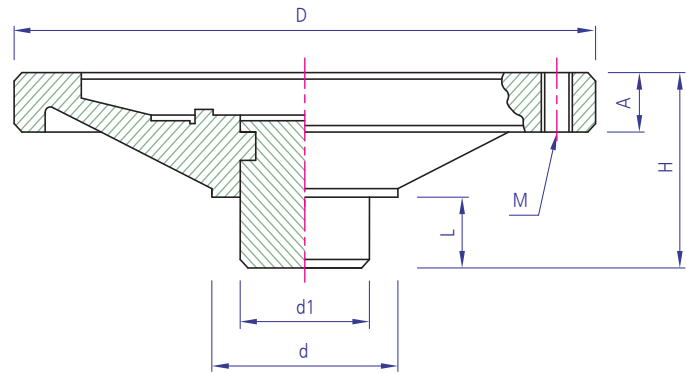
핸들

YKHD-BR-XH Series



Technical Data

Material	Body:Bakelite, Boss:Steel, RING: SUS304
Surface Processing	Body:Black, Boss:Zn(백)
Application	Shaft handle용



TYPE	D	H	A	L	d	d1	M
XH-80Ø	80	45	14	17	40	30	M6*1.0
XH-100Ø	100	45	14	16	40	30	M6*1.0
XH-125Ø	125	49	15	21	47	35	M8*1.5
XH-140Ø	140	49	18	17	49	38	M8*1.5
XH-150Ø	150	50	18	17	49	38	M10*1.5
XH-175Ø	175	57	19	24	58	40	M10*1.5
XH-200Ø	200	71	21	25	61	45	M10*1.5
XH-225Ø	225	69	21	25	72	50	M12*1.75

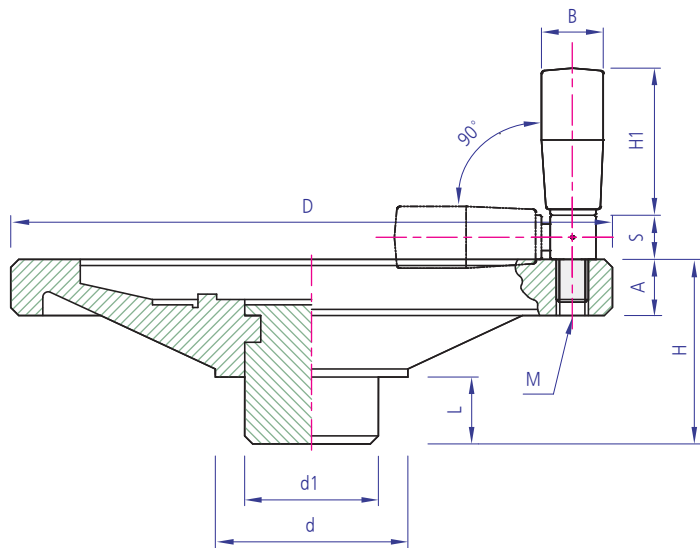
핸들

YKHD-BR-XH-F Series



Technical Data

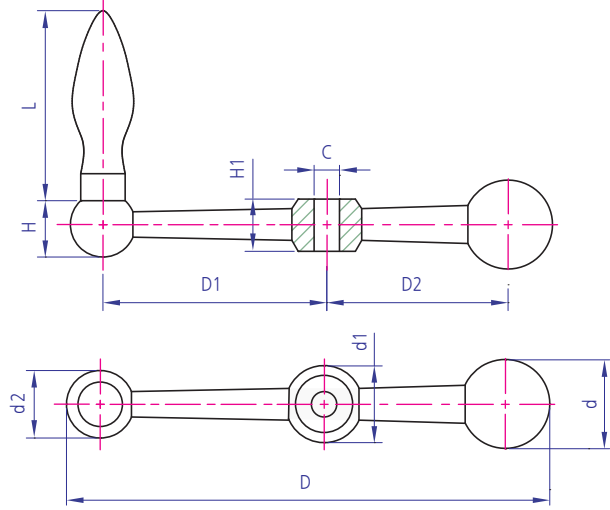
Material	Body:Plastic
Surface Processing	Black
Application	Shaft handle용



TYPE	D	H	A	L	d	d1	H1	S	B	M
XH-F-80Ø	80	45	14	17	40	30	50	15	21	M6*1.0
XH-F-100Ø	100	45	14	16	40	30	50	15	21	M6*1.0
XH-F-125Ø	125	49	15	21	47	35	65	19	23	M8*1.25
XH-F-140Ø	140	49	18	17	49	38	65	19	23	M8*1.25
XH-F-150Ø	150	50	18	17	49	38	65	19	23	M10*1.5
XH-F-175Ø	175	57	19	24	58	40	65	19	23	M10*1.5
XH-F-200Ø	200	71	21	25	61	45	84	16	27	M10*1.5
XH-F-225Ø	225	69	21	25	72	50	84	16	27	M12*1.75

Technical Data

Material	STEEL
Surface Processing	Cr
Application	Shaft handle용



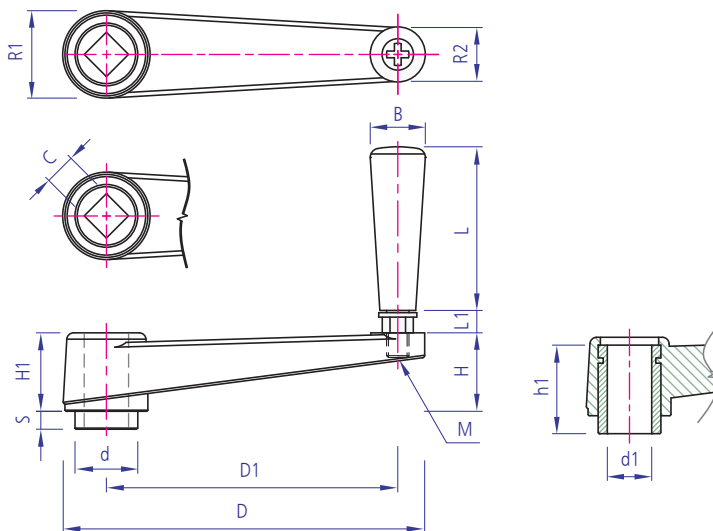
TYPE	D	D1	D2	d	d1	d2	C	H	H1	B	L
AXG-81	81	33	33	22	22	16	8	15	15	16	50
AXG-100	100	39	40	24	28	20	8	17	19	20	64
AXG-127	127	50	50	34	29	23	10	21	22	20	64
AXG-148	148	62	62	32	30	20	10	18	23	20	64
AXG-186	186	82	75	38	35	23	12	20	25	25	82

핸들
YKHD-BR-AXG Series



Technical Data

Material	Body:Nylon, Boss:Steel, 손잡이:Nylon, Steel
Surface Processing	Black
Application	Shaft handle용



TYPE	D	D1	H	H1	h1	S	B	L	R1	R2	d	C	M
CRK-A-105	105	80	36	26	34	10	17	44	30	18	20	10	M6*1.0
CRK-A-128	128	101	32	29	37	10	21	55	33	22	24	12	M8*1.25
CRK-A-160	160	130	35	35	40	10	25	74	39	24	28	14	M10*1.5

핸들
YKHD-BR-CRK-A Series



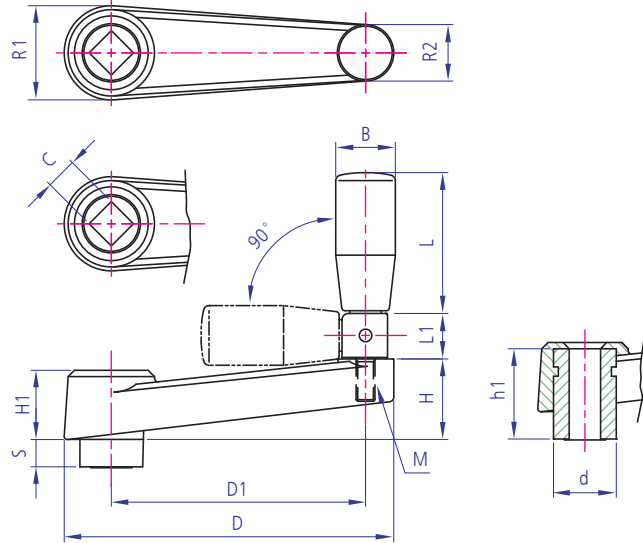
핸들

YKHD-BR-CRK-2A Series



Technical Data

Material	Body:Nylon, Boss:Steel, 손잡이:Nylon, Steel
Surface Processing	Black
Application	Shaft handle용



TYPE	D	D1	H	H1	h1	S	B	L	L1	R1	R2	d	C	M
CRK-2A-105	105	80	36	26	34	10	17	44	15	30	18	20	10	M6*1.0
CRK-2A-128	128	101	32	29	37	10	21	50	20	33	22	24	12	M8*1.25
CRK-2A-160	160	130	35	35	40	10	23	65	20	39	24	28	14	M10*1.5

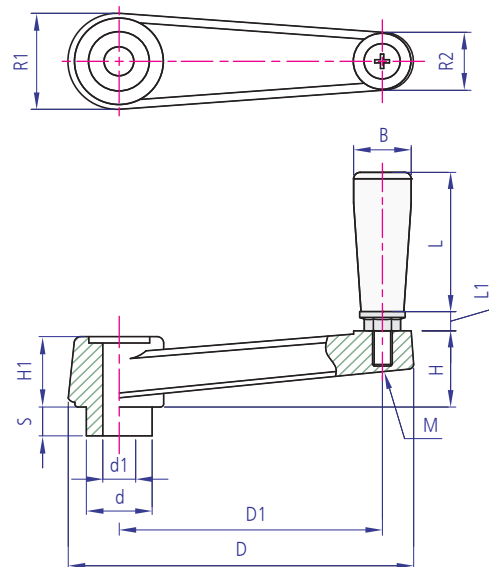
핸들

YKHD-BR-CRK-C Series



Technical Data

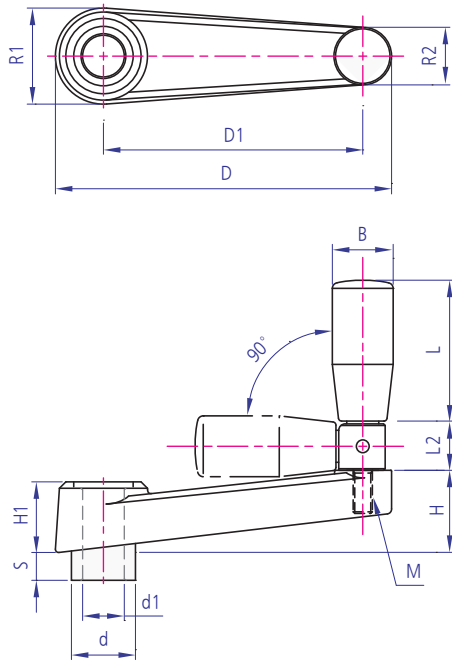
Material	Body:Nylon, Boss:Steel, 손잡이:Nylon, Steel
Surface Processing	Black
Application	Shaft handle용



TYPE	D	D1	H	H1	S	B	L	R1	R2	d	C	M
CRK-C-105	105	80	36	26	10	17	44	30	18	20	10	M6*1.0
CRK-C-128	128	101	32	29	10	21	55	33	22	24	12	M8*1.25
CRK-C-160	160	130	35	35	10	25	74	39	24	28	14	M10*1.5

Technical Data

Material	Body:Nylon, Boss:Steel, 손잡이:Nylon, Steel
Surface Processing	Black
Application	Shaft handle용



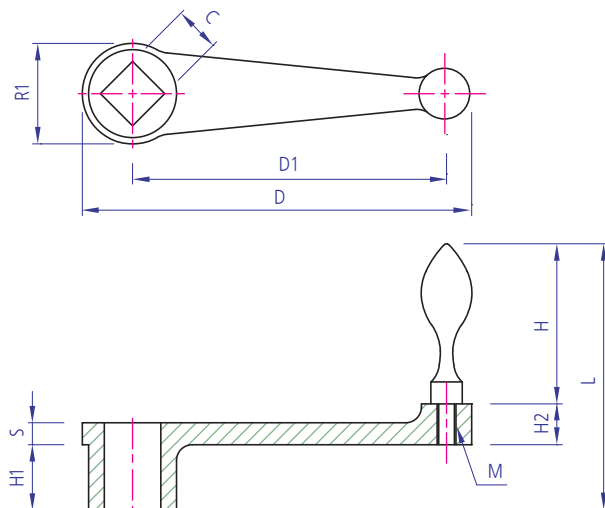
핸들 YKHD-BR-CRK-2C Series



TYPE	D	D1	H	H1	S	B	L	L1	R1	R2	d	C	M
CRK-2C-105	105	80	36	26	10	21	44	15	30	18	20	10	M6
CRK-2C-128	128	101	32	29	10	21	50	20	33	22	24	12	M8
CRK-2C-160	160	130	35	35	10	23	65	20	39	24	28	14	M10

Technical Data

Material	Body:FCD(철주물), 손잡이:Steel
Surface Processing	Body:BLACK,해머톤, 손잡이:Cr
Application	Shaft handle용



핸들 YKHD-BR-CRK-F Series



TYPE	D	D1	C	R1	L	S	H	H1	H2	M
CRK-F-100	123	100	14.5	32	85	7	51	21	13	M6
CRK-F-150	180	150	18.5	44	118	8	73	30	15	M8
CRK-F-200	243	200	22.5	59	138	12	80	37	22	M10
CRK-F-250	295	250	24.5	68	157	13	100	35	22	M12

